

BALDOR® • RELIANCE 

Product Information Packet

XM05162

26M 6P XPFC HOR 56 T'STAT, INVERTER

| Part Detail | | | | | | | |
|-------------|--------|-------------|------------|-------------|--------|---------------|------------|
| Revision: | A | Status: | PRD/A | Change #: | | Proprietary: | No |
| Type: | AC | Elec. Spec: | 35WGM497 | CD Diagram: | CD0005 | Mfg Plant: | |
| Mech. Spec: | 35E356 | Layout: | 35LYE356 | Poles: | 06 | Created Date: | 12-07-2018 |
| Base: | RG | Eff. Date: | 05-05-2021 | Leads: | 9#18 | | |

| Specs | | | |
|---------------------------------|-----------------------|--------------------------------|-------------------|
| Catalog Number: | XM05162 | Feedback Device: | NO FEEDBACK |
| Enclosure: | XPFC | Front Shaft Indicator: | None |
| Frame: | 56 | Heater Indicator: | No Heater |
| Frame Material: | Steel | Insulation Class: | F |
| Output @ Frequency: | .750 HP @ 50 HZ | Inverter Code: | Inverter Duty |
| | 1.000 HP @ 60 HZ | IP Rating: | NONE |
| Synchronous Speed @ Frequency: | 1200 RPM @ 60 HZ | KVA Code: | K |
| Voltage @ Frequency: | 380.0 V @ 50 HZ | Lifting Lugs: | No Lifting Lugs |
| | 230.0 V @ 60 HZ | Locked Bearing Indicator: | No Locked Bearing |
| | 190.0 V @ 50 HZ | Motor Lead Quantity/Wire Size: | 9 @ 18 AWG |
| | 460.0 V @ 60 HZ | Motor Lead Termination: | Flying Leads |
| XP Class and Group: | CLI GP D; CLII GP F,G | Motor Type: | X3526M |
| XP Division: | Division I | Mounting Arrangement: | F1 |
| Agency Approvals: | UR | Power Factor: | 64 |
| | CSA EEV | Product Family: | General Purpose |
| | CSA | Pulley End Bearing Type: | Ball |
| Auxillary Box: | No Auxillary Box | Pulley Face Code: | Standard |
| Auxillary Box Lead Termination: | None | Pulley Shaft Indicator: | Standard |

| | | | |
|---------------------------------------|---------------------------|------------------------------------|----------------------------|
| Base Indicator: | Rigid | Rodent Screen: | None |
| Bearing Grease Type: | Polyrex EM (-20F +300F) | RoHS Status: | ROHS NON-COMPLIANT |
| Blower: | None | Shaft Ground Indicator: | No Shaft Grounding |
| Constant Torque Speed Range: | 2.2 | Shaft Rotation: | Reversible |
| Current @ Voltage: | 3.600 A @ 230.0 V | Shaft Slinger Indicator: | No Slinger |
| | 3.600 A @ 208.0 V | Speed Code: | Single Speed |
| | 3.400 A @ 190.0 V | Motor Standards: | NEMA |
| | 1.800 A @ 460.0 V | Starting Method: | Direct on line |
| | 1.700 A @ 380.0 V | Thermal Device - Bearing: | None |
| Design Code: | B | Thermal Device - Winding: | Normally Closed Thermostat |
| Drip Cover: | No Drip Cover | Vibration Sensor Indicator: | No Vibration Sensor |
| Duty Rating: | CONT | Winding Thermal 1: | None |
| Electrically Isolated Bearing: | Not Electrically Isolated | Winding Thermal 2: | None |
| | | XP Temp Code: | T3C |

| Nameplate NP0887XPSLEV | | | | | | | | | |
|-----------------------------|------------------|----|--------|--------------|------------------|----------|------|----------|------|
| NO. | | | | | CC | 010A | | | |
| S/N | | | | | TEMP CODE | T3C | | | |
| SPEC. | 35E356M497G1 | | | | INV. TYPE | PWM | | | |
| CAT.NO. | XM05162 | | | | C HP FR | 60 | | C HP TO | 90 |
| HP | 1//.75 | | | | CT HZ FROM | 2.2 | | CT HZ TO | 60 |
| VOLTS | 230/460//190/380 | | | | VT HZ FROM | 2.2 | | VT HZ TO | 60 |
| AMPS | 3.6/1.8//3.4/1.7 | | | | MAG CUR | 2.4/1.2 | | | |
| RPM | 1155//960 | | | | MX RPM | 1800 | | | |
| HZ | 60//50 | PH | 3 | CL | F | NOM.EFF. | 82.5 | | |
| SER.F. | 1.00 | | DES | B | SL HZ | 2.2 | | WK2 | 0.16 |
| FRAME | 56 | | RATING | 40C AMB-CONT | | | | | |
| 55C AMB AT 1.00 SF SINEWAVE | | | | | | | | | |
| NEMA MG-1 PART 5, IP54 | | | | | 1.15 SF SINEWAVE | | | | |
| | | | | | | | | | |

| Parts List | | |
|---------------|--|----------|
| Part Number | Description | Quantity |
| SA363795 | SA 35E356M497G1 | 1.000 EA |
| RA353094 | RA 35E356M497G1 | 1.000 EA |
| 35FN3002A05SP | EXFN, PLASTIC, 6.376 OD, .638 ID | 1.000 EA |
| 35CB3001A01SP | EXPL CONDUIT BOX, MACH, 1/2" PIPE TAP LE | 1.000 EA |
| 11XW1032G06 | 10-32 X .38, TAPTITE II, HEX WSHR SLTD U | 1.000 EA |
| HW3001B01 | BRASS CUP WASHER, FOR #10 SCREW | 1.000 EA |
| 35EP3700A01SP | FR ENDPLATE, XPFC | 1.000 EA |
| HW5100A03 | WAVY WASHER (W1543-017) | 1.000 EA |
| 35EP3701A01 | PU ENDPLATE, XPFC - 205 BRG | 1.000 EA |
| XY3118A12 | 5/16-18 HEX NUT DIRECTIONAL SERRATION | 4.000 EA |
| 51XB1214A16 | 12-14X1.00 HXWSSLD SERTYB | 1.000 EA |
| 35FH4005A01SP | IEC FH NO GREASER W/PRIMED | 1.000 EA |
| 51XW1032A06 | 10-32 X .38, TAPTITE II, HEX WSHR SLTD S | 3.000 EA |
| 35CB3500A01SP | CONDUIT BOX LID, MACH | 1.000 EA |
| 51XN2520A16 | SCREW, HEX WS SLT, ZN, 1/4-20 X 1.00 | 4.000 EA |
| HW2501D13 | KEY, 3/16 SQ X 1.375 | 1.000 EA |
| HA7000A04 | KEY RETAINER 0.625 DIA SHAFTS | 1.000 EA |
| 85XU0407S04 | 4X1/4 U DRIVE PIN STAINLESS | 6.000 EA |
| NP0018F | ALUM UL XP CONDUIT BOX NAMEPLATE | 1.000 EA |
| HA1025A21 | WSHR,FELT .125" THK | 1.000 EA |
| MJ1000A02 | GREASE, MOBIL POLYREX EM - 124047 | 0.050 LB |
| MG1025G29 | WILKOFASST, 789.229, DARK CHARCOAL GRAY | 0.017 GA |
| HA3104A08 | THRUBOLT-5/16-18X9.375 X X | 4.000 EA |
| LB1119N | WARNING LABEL | 1.000 EA |

| Parts List (continued) | | |
|-------------------------------|---|-----------------|
| Part Number | Description | Quantity |
| LC0145B01 | CONNECTION LABEL | 1.000 EA |
| NP0887XPSLEV | SS XP INV UL CSA-EEV CC CL-I GP-D | 1.000 EA |
| 36PA1001 | PKG GRP, PRINT PK1017A06 | 1.000 EA |
| MN416A01 | TAG-INSTAL-MAINT no wire (2100/bx) 4/22 | 1.000 EA |

AC Induction Motor Performance Data

Record # 73789

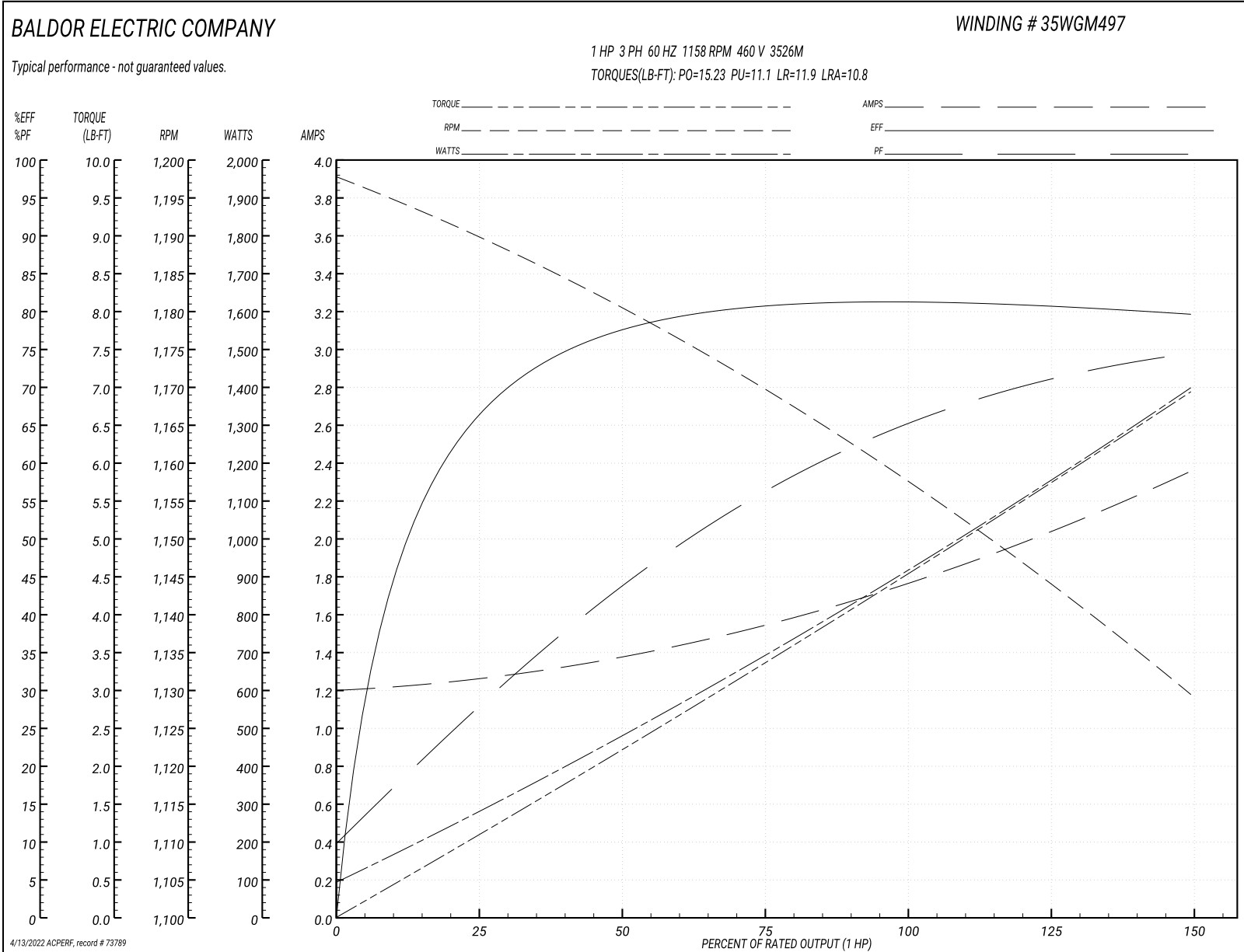
Typical performance - not guaranteed values

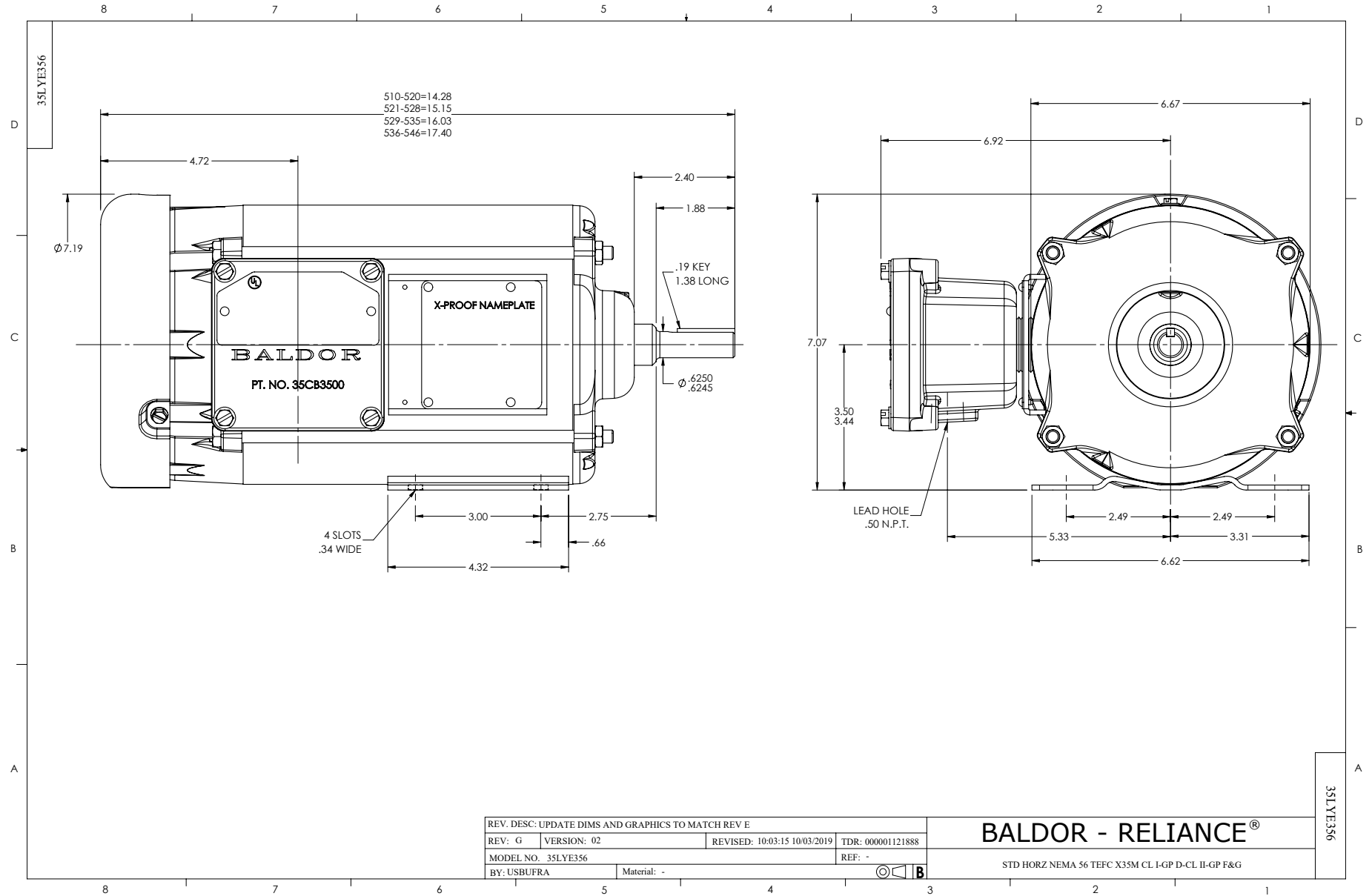
| Winding: 35WGM497-R087 | | Type: 3526M | | Enclosure: XPFC | |
|-------------------------------|------------------|---------------------|--|------------------------------|------------|
| Nameplate Data | | | 460 V, 60 Hz: High Voltage Connection | | |
| Rated Output (HP) | 1//.75 | | Full Load Torque | 4.51 LB-FT | |
| Volts | 230/460//190/380 | | Start Configuration | direct on line | |
| Full Load Amps | 3.6/1.8//3.4/1.7 | | Breakdown Torque | 15.23 LB-FT | |
| R.P.M. | 1155//960 | | Pull-up Torque | 11.1 LB-FT | |
| Hz | 60//50 | Phase | 3 | Locked-rotor Torque | 11.9 LB-FT |
| NEMA Design Code | B | KVA Code | K | Starting Current | 10.8 A |
| Service Factor (S.F.) | 1 | | No-load Current | 1.21 A | |
| NEMA Nom. Eff. | 82.5 | Power Factor | 64 | Line-line Res. @ 25°C | 16.1 Ω |
| Rating - Duty | 40C AMB-CONT | | Temp. Rise @ Rated Load | 48°C | |
| | | | Locked-rotor Power Factor | 41.5 | |
| | | | Rotor inertia | 0.155 LB-FT ² | |

Load Characteristics 460 V, 60 Hz, 1 HP

| % of Rated Load | 25 | 50 | 75 | 100 | 125 | 150 |
|------------------------|-----------|-----------|-----------|------------|------------|------------|
| Power Factor | 28 | 44 | 56 | 65 | 71 | 75 |
| Efficiency | 66 | 77 | 80.7 | 81.4 | 80.9 | 79.5 |
| Speed | 1190 | 1180 | 1170 | 1158 | 1145 | 1129 |
| Line amperes | 1.25 | 1.37 | 1.54 | 1.77 | 2.04 | 2.35 |

Performance Graph at 460V, 60Hz, 1.0HP Typical performance - Not guaranteed values





CD0005

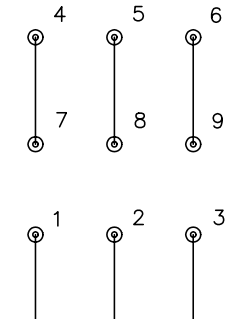


LOW VOLTAGE
(2Y)



LINE

HIGH VOLTAGE
(1Y)



LINE

NOTES:

1. INTERCHANGE ANY TWO LINE LEADS TO REVERSE ROTATION.
2. OPTIONAL THERMOSTATS ARE PROVIDED WHEN SPECIFIED.
3. ACTUAL NUMBER OF INTERNAL PARALLEL CIRCUITS MAY BE A MULTIPLE OF THOSE SHOWN ABOVE.
4. LEAD COLORS ARE OPTIONAL. LEADS MUST ALWAYS BE NUMBERED AS SHOWN.

| | | | |
|---|---------|-------------------------|--------------|
| REV. DESC: REVISE TO SHOW OPTIONAL COLORS | | | |
| REV. LTR: E | BY: JLP | REVISED: 01/19/99 10:15 | TDR: 0171435 |
| 900000 | | FILE: AAA00005140 | MDL: - |
| | | MTL: - | |

BALDOR ELECTRIC Co.

3PH, DV, 9 LEADS

CD0005

Marketing maintained PDF of MN416:

<http://www.baldor.com/support/Literature/Load.ashx/MN416?ManNumber=MN416>