

BALDOR® • RELIANCE 

Product Information Packet

XM18542T

5HP,RPM,3PH,60HZ,184T,XPFC,F1

Part Detail							
Revision:	B	Status:	PRD/A	Change #:		Proprietary:	No
Type:	AC	Elec. Spec:	36WGR866	CD Diagram:	CD0005	Mfg Plant:	
Mech. Spec:		Layout:	36LYR726	Poles:	04	Created Date:	09-29-2020
Base:		Eff. Date:	04-16-2021	Leads:	9#16		

Specs			
Catalog Number:	XM18542T	Front Shaft Indicator:	None
Enclosure:	XPFC	Heater Indicator:	No Heater
Frame:	184T	Insulation Class:	F
Frame Material:	Steel	Inverter Code:	Inverter Duty
Output @ Frequency:	3.000 HP @ 50 HZ	IP Rating:	NONE
	5.000 HP @ 60 HZ	KVA Code:	L
Synchronous Speed @ Frequency:	1800 RPM @ 50 HZ	Lifting Lugs:	No Lifting Lugs
Voltage @ Frequency:	380.0 V @ 50 HZ	Locked Bearing Indicator:	No Locked Bearing
	230.0 V @ 60 HZ	Motor Lead Quantity/Wire Size:	9 @ 16 AWG
	190.0 V @ 50 HZ	Motor Lead Termination:	Flying Leads
	460.0 V @ 60 HZ	Motor Type:	3646M
XP Class and Group:	CLI GP D; CLII GP F,G	Mounting Arrangement:	F1
XP Division:	Division I	Power Factor:	74
Agency Approvals:	UL	Product Family:	General Purpose
	CSA EEV	Pulley End Bearing Type:	Ball
Auxillary Box:	No Auxillary Box	Pulley Face Code:	Standard
Auxillary Box Lead Termination:	None	Pulley Shaft Indicator:	Standard
Base Indicator:	Rigid	Rodent Screen:	None

Bearing Grease Type:	Polyrex EM (-20F +300F)	RoHS Status:	ROHS NON-COMPLIANT
Blower:	None	Shaft Ground Indicator:	No Shaft Grounding
Constant Torque Speed Range:	30	Shaft Rotation:	Reversible
Current @ Voltage:	5.600 A @ 380.0 V	Shaft Slinger Indicator:	No Slinger
	6.800 A @ 460.0 V	Speed Code:	Single Speed
	13.600 A @ 230.0 V	Motor Standards:	NEMA
	11.200 A @ 190.0 V	Starting Method:	Direct on line
Design Code:	A	Thermal Device - Bearing:	None
Drip Cover:	No Drip Cover	Thermal Device - Winding:	Normally Closed Thermostat
Duty Rating:	CONT	Vibration Sensor Indicator:	No Vibration Sensor
Electrically Isolated Bearing:	Not Electrically Isolated	Winding Thermal 1:	None
Feedback Device:	NO FEEDBACK	Winding Thermal 2:	None
		XP Temp Code:	T3C

Nameplate NP0887XPSLEV									
NO.					CC	010A			
S/N					TEMP CODE	T3C			
SPEC.	36-0000-0424				INV.TYPE	PWM			
CAT.NO.	XM18542T				C HP FR	60		C HP TO	90
HP	5/3				CT HZ FROM	30		CT HZ TO	60
VOLTS	230/460//190/380				VT HZ FROM	6		VT HZ TO	60
AMPS	13.6/6.8//11.2/5.6				MAG CUR	7.4/3.7			
RPM	1750//1460				MX RPM	2700			
HZ	60//50	PH	3	CL	F	NOM.EFF.	89.5		
SER.F.	1.00	DES	A	SL HZ	1.4	WK2	0.428		
FRAME	184T	RATING	40C AMB-CONT						
55C AMB AT 1.00 SF SINEWAVE									
NEMA MG-1 PART 5, IP54					1.15 SF SINEWAVE				

Parts List		
Part Number	Description	Quantity
SA386179	SA 36-0000-0424	1.000 EA
RA376453	RA 36-0000-0424	1.000 EA
LB1119N	WARNING LABEL	1.000 EA
LC0145B01	CONNECTION LABEL	1.000 EA
NP0887XPSLEV	SS XP INV UL CSA-EEV CC CL-I GP-D	1.000 EA
85XU0407S04	4X1/4 U DRIVE PIN STAINLESS	2.000 EA
85XU0407S04	4X1/4 U DRIVE PIN STAINLESS	4.000 EA
MN416A01	TAG-INSTAL-MAINT no wire (2100/bx) 4/22	1.000 EA
NP0018F	ALUM UL XP CONDUIT BOX NAMEPLATE	1.000 EA
36FH4009A70	IEC FH W/(2)GREASER HOLES, W/ PRIMER	1.000 EA
WD4100A03	DE-750 HEYCO PLUG 62MP0750 MICRO PLASTIC	2.000 EA
51XW1032A06	10-32 X .38, TAPTITE II, HEX WSHR SLTD S	3.000 EA
36FN3000C01SP	EXFN, PLASTIC, 5.25 OD, .912 ID	1.000 EA
51XB1214A16	12-14X1.00 HXWSSLD SERTYB	1.000 EA
MJ1000A02	GREASE, MOBIL POLYREX EM - 124047	0.050 LB
HA3105A24	THRUBOLT- 3/8-16, CUT TO 12.810" LONG	4.000 EA
XY3816A12	3/8-16 FINISHED NUT	4.000 EA
36EP3700A01	FR ENDPLATE, MACH	1.000 EA
HW5100A05	WVY WSHR F/205 & 304 BRGS	1.000 EA
HW4500A01	1641B(ALEMITE)400 UNIV, GREASE FITT	1.000 EA
HW4500A19	1/4-28X1/4 SLOTTED PLUG F/S	1.000 EA
36EP3701A01	PU ENDPLATE, MACH	1.000 EA
HW4500A01	1641B(ALEMITE)400 UNIV, GREASE FITT	1.000 EA
HW4500A19	1/4-28X1/4 SLOTTED PLUG F/S	1.000 EA

Parts List (continued)		
Part Number	Description	Quantity
35CB3001A02SP	EXPL PROOF CONDUIT BOX, 3/4"PIPE TAP LEA	1.000 EA
11XW1032G06	10-32 X .38, TAPTITE II, HEX WSHR SLTD U	1.000 EA
HW3001B01	BRASS CUP WASHER, FOR #10 SCREW	1.000 EA
35CB3500A01SP	CONDUIT BOX LID, MACH	1.000 EA
51XN2520A16	SCREW, HEX WS SLT, ZN, 1/4-20 X 1.00	4.000 EA
MG1500Y02	WILKOPON PRIMER YELLOW	0.022 GA
MG1025G29	WILKOFASST, 789.229, DARK CHARCOAL GRAY	0.022 GA
G0PA1000	PKG GRP, PRINT PK1026A06	1.000 EA
HW2501E19	STD SQUARE KEY .25 SQUARE X 2.125 LONG	1.000 EA
HA7000A02	KEY RETAINER RING, 1 1/8 DIA, 1 3/8 DIA	1.000 EA

AC Induction Motor Performance Data

Record # 78059

Typical performance - not guaranteed values

Winding: 36WGR866-R001		Type: 3646M		Enclosure: XPFC	
Nameplate Data			460 V, 60 Hz: High Voltage Connection		
Rated Output (HP)	5//3		Full Load Torque	14.92 LB-FT	
Volts	230/460//190/380		Start Configuration	direct on line	
Full Load Amps	13.6/6.8//11.2/5.6		Breakdown Torque	68.7 LB-FT	
R.P.M.	1750//1460		Pull-up Torque	35.1 LB-FT	
Hz	60//50	Phase	3	Locked-rotor Torque	42.8 LB-FT
NEMA Design Code	A	KVA Code	L	Starting Current	59.1 A
Service Factor (S.F.)	1		No-load Current	3.71 A	
NEMA Nom. Eff.	89.5	Power Factor	74	Line-line Res. @ 25°C	1.91 Ω
Rating - Duty	40C AMB-CONT		Temp. Rise @ Rated Load	58°C	
			Locked-rotor Power Factor	39.7	
			Rotor inertia	0.428 LB-FT ²	

Load Characteristics 460 V, 60 Hz, 5 HP

% of Rated Load	25	50	75	100	125	150
Power Factor	36	57	69	76	81	83
Efficiency	80.6	87.7	89.6	89.8	89.5	88.7
Speed	1789	1780	1770	1760	1749	1737
Line amperes	4.01	4.72	5.7	6.83	8.1	9.53

Performance Graph at 460V, 60Hz, 5.0HP Typical performance - Not guaranteed values

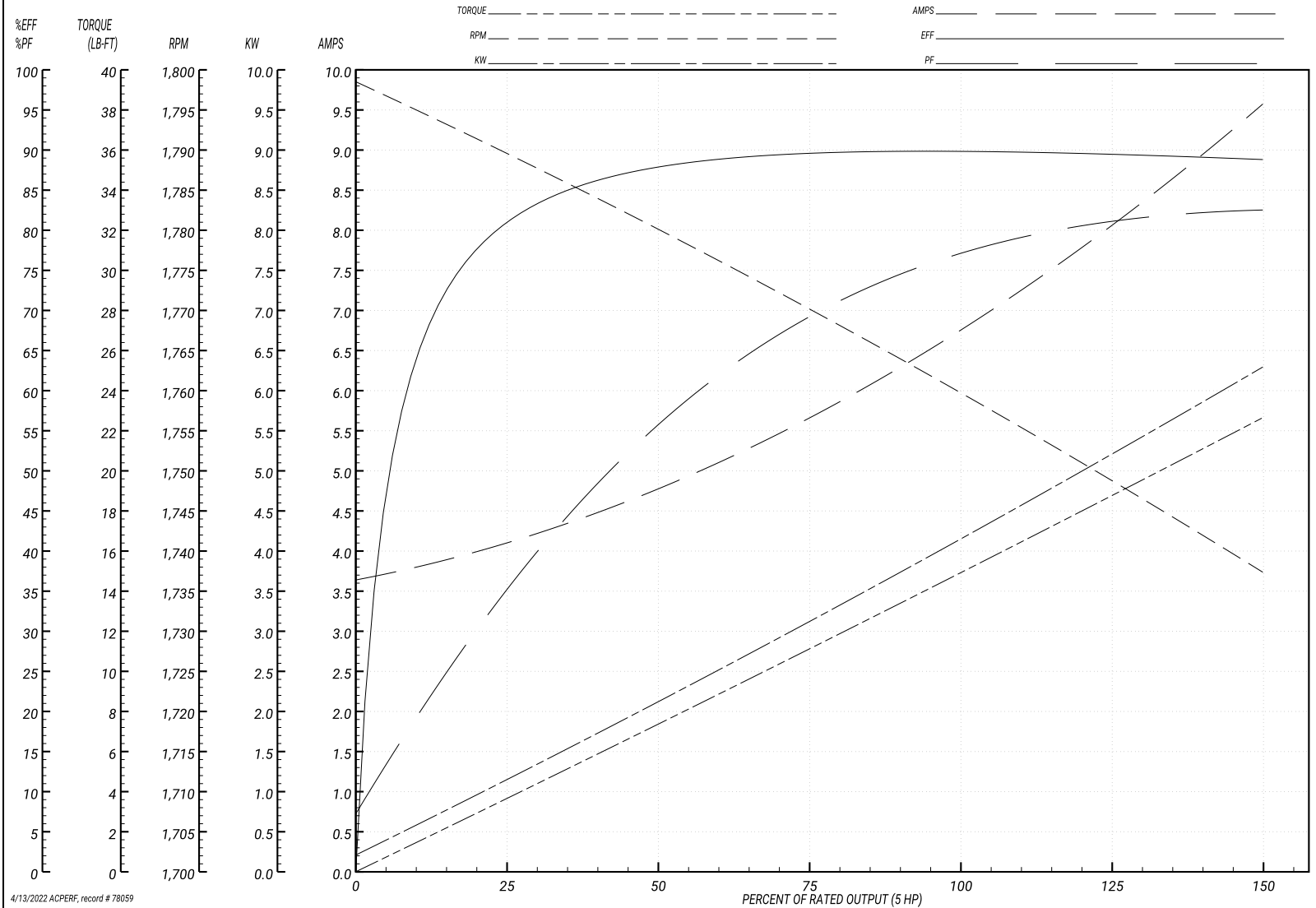
BALDOR ELECTRIC COMPANY

WINDING # 36WGR866

Typical performance - not guaranteed values.

5 HP 3 PH 60 HZ 1760 RPM 460 V 3646M

TORQUES(LB-FT): PO=68.7 PU=35.1 LR=42.8 LRA=59.1



4/13/2022 ACPERF, record # 78059

AC Induction Motor Performance Data

Record # 78060

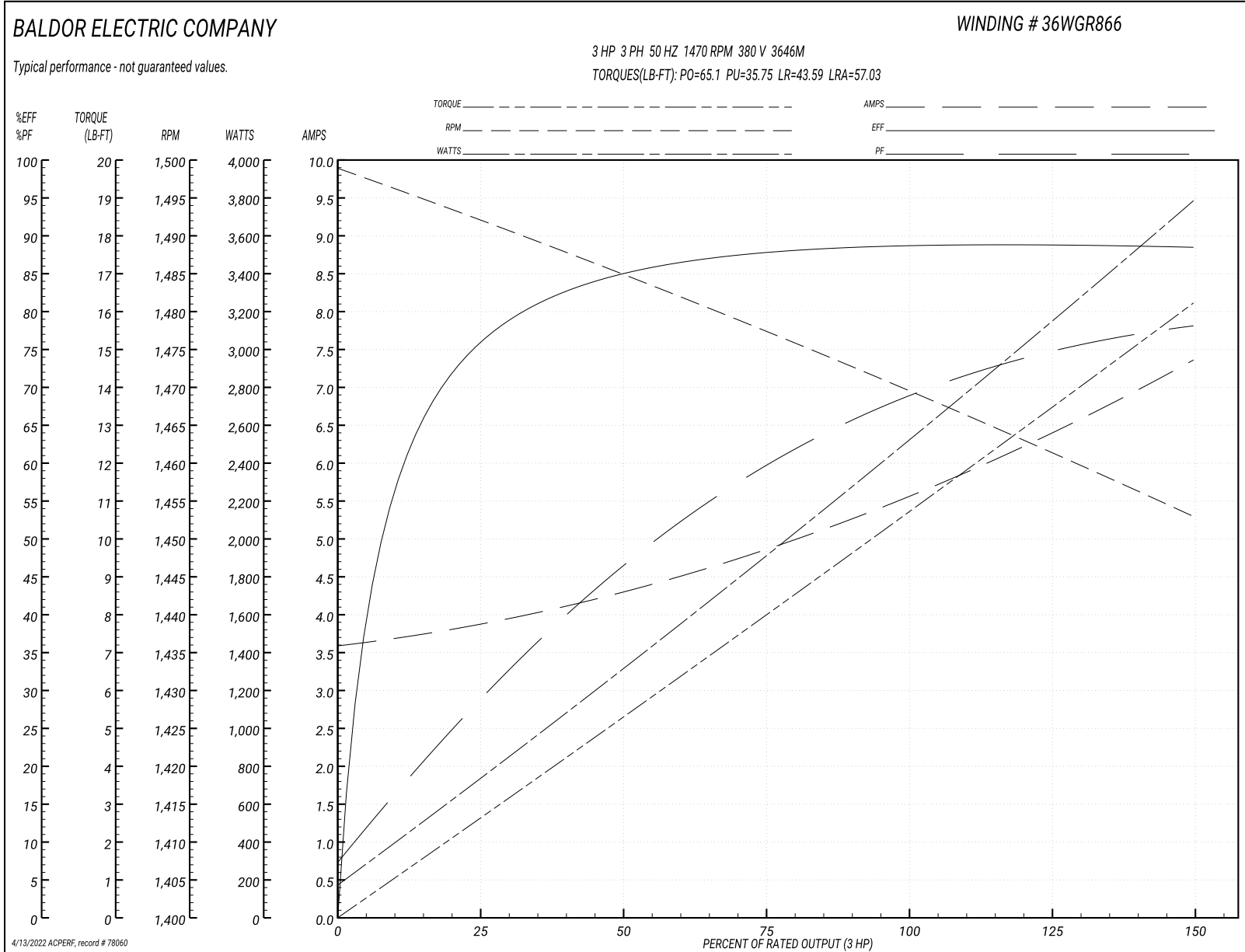
Typical performance - not guaranteed values

Winding: 36WGR866-R001		Type: 3646M		Enclosure: XPFC	
Nameplate Data			380 V, 50 Hz: High Voltage Connection		
Rated Output (HP)	5//3		Full Load Torque	10.7 LB-FT	
Volts	230/460//190/380		Start Configuration	direct on line	
Full Load Amps	13.6/6.8//11.2/5.6		Breakdown Torque	65.1 LB-FT	
R.P.M.	1750//1460		Pull-up Torque	35.75 LB-FT	
Hz	60//50	Phase	3	Locked-rotor Torque	43.59 LB-FT
NEMA Design Code	A	KVA Code	L	Starting Current	57.03 A
Service Factor (S.F.)	1		No-load Current	3.63 A	
NEMA Nom. Eff.	89.5	Power Factor	74	Line-line Res. @ 25°C	1.91 Ω
Rating - Duty	40C AMB-CONT		Temp. Rise @ Rated Load	42°C	
			Locked-rotor Power Factor	44	
			Rotor inertia	0.428 LB-FT ²	

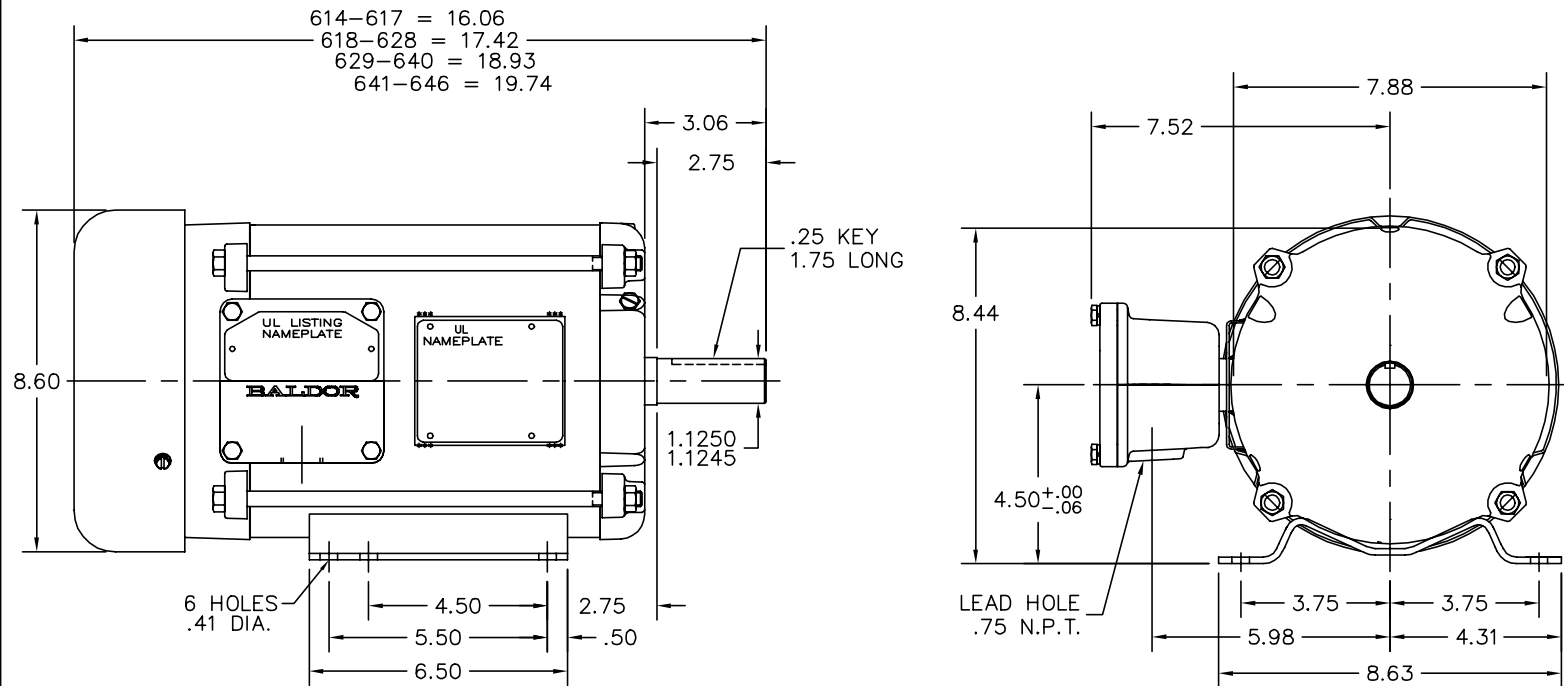
Load Characteristics 380 V, 50 Hz, 3 HP

% of Rated Load	25	50	75	100	125	150
Power Factor	29	47	60	68	75	78
Efficiency	75.9	84.9	87.8	88.7	88.8	88.4
Speed	1492	1485	1477	1470	1461	1453
Line amperes	3.82	4.27	4.89	5.6	6.42	7.34


Performance Graph at 380V, 50Hz, 3.0HP Typical performance - Not guaranteed values



36LYR726



CUSTOMER IS RESPONSIBLE FOR DETERMINING THAT BALDOR'S PRODUCT WILL PERFORM SUITABLY IN THE INTENDED APPLICATION.

REV. DESC: NEW		
REV. LTR: -	VERSION: 00	TDR: 000001094184
FILE: \AAA\00246\518	REVISED: 02:22:14 12/18/2018	BY: ENMICW1
MTL: -		

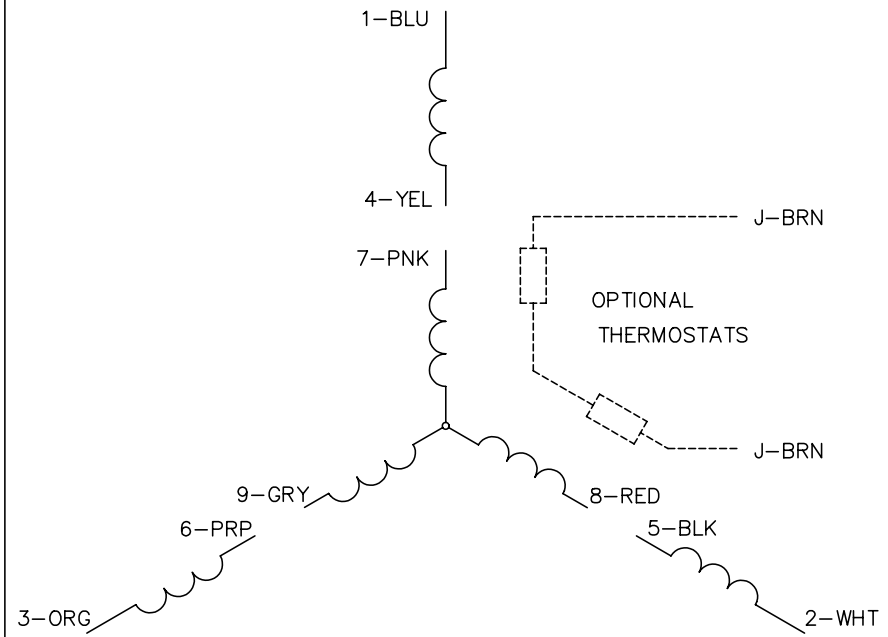
BALDOR - RELIANCE®

HORZ 182-4T XPFC M CLI GP-D, CLI GP-F&G, INV W/EPACT STACKS

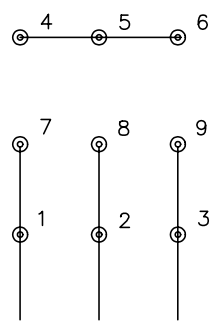
SH 1 of 1

36LYR726

CD0005

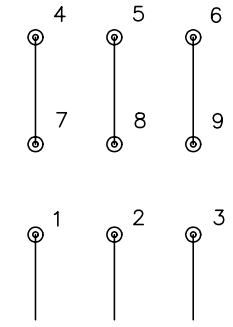


LOW VOLTAGE
(2Y)



LINE

HIGH VOLTAGE
(1Y)



LINE

NOTES:

1. INTERCHANGE ANY TWO LINE LEADS TO REVERSE ROTATION.
2. OPTIONAL THERMOSTATS ARE PROVIDED WHEN SPECIFIED.
3. ACTUAL NUMBER OF INTERNAL PARALLEL CIRCUITS MAY BE A MULTIPLE OF THOSE SHOWN ABOVE.
4. LEAD COLORS ARE OPTIONAL. LEADS MUST ALWAYS BE NUMBERED AS SHOWN.

REV. DESC: REVISE TO SHOW OPTIONAL COLORS			
REV. LTR: E	BY: JLP	REVISED: 01/19/99 10:15	TDR: 0171435
90000		FILE: AAA00005140	MDL: -
		MTL: -	

BALDOR ELECTRIC Co.

3PH, DV, 9 LEADS

CD0005

Marketing maintained PDF of MN416:

<http://www.baldor.com/support/Literature/Load.ashx/MN416?ManNumber=MN416>