

BALDOR® • RELIANCE 

Product Information Packet

XM21562T

5HP, 1165//975RPM, 3PH, 60HZ, 215T, XPFC, F1

| Part Detail | | | | | | | |
|-------------|----|-------------|------------|-------------|--------|---------------|------------|
| Revision: | D | Status: | PRD/A | Change #: | | Proprietary: | No |
| Type: | AC | Elec. Spec: | 37WGQ067 | CD Diagram: | CD0005 | Mfg Plant: | |
| Mech. Spec: | | Layout: | 37LYN517 | Poles: | 06 | Created Date: | 04-04-2019 |
| Base: | | Eff. Date: | 05-25-2021 | Leads: | 9#14 | | |

| Specs | | | |
|---------------------------------|-----------------------|--------------------------------|---------------------------|
| Catalog Number: | XM21562T | Duty Rating: | CONT |
| Enclosure: | XPFC | Electrically Isolated Bearing: | Not Electrically Isolated |
| Frame: | 215T | Feedback Device: | NO FEEDBACK |
| Frame Material: | Steel | Heater Indicator: | No Heater |
| Output @ Frequency: | 3.000 HP @ 50 HZ | Insulation Class: | F |
| | 5.000 HP @ 60 HZ | Inverter Code: | Inverter Duty |
| Synchronous Speed @ Frequency: | 1200 RPM @ 60 HZ | IP Rating: | NONE |
| Voltage @ Frequency: | 230.0 V @ 60 HZ | KVA Code: | K |
| | 190.0 V @ 50 HZ | Lifting Lugs: | Standard Lifting Lugs |
| | 380.0 V @ 50 HZ | Locked Bearing Indicator: | Locked Bearing |
| | 460.0 V @ 60 HZ | Motor Lead Termination: | Flying Leads |
| XP Class and Group: | CLI GP D; CLII GP F,G | Motor Type: | 3752M |
| XP Division: | Division I | Mounting Arrangement: | F1 |
| Agency Approvals: | UR | Power Factor: | 71 |
| | CSA EEV | Product Family: | General Purpose |
| | CSA | Pulley Face Code: | Standard |
| Auxillary Box: | No Auxillary Box | Rodent Screen: | None |
| Auxillary Box Lead Termination: | None | RoHS Status: | ROHS NON-COMPLIANT |

| | | | |
|-------------------------------------|-------------------------|------------------------------------|----------------------------|
| Base Indicator: | Rigid | Shaft Ground Indicator: | No Shaft Grounding |
| Bearing Grease Type: | Polyrex EM (-20F +300F) | Shaft Rotation: | Reversible |
| Blower: | None | Speed Code: | Single Speed |
| Constant Torque Speed Range: | 6 | Motor Standards: | NEMA |
| Current @ Voltage: | 7.200 A @ 460.0 V | Starting Method: | Direct on line |
| | 5.900 A @ 380.0 V | Thermal Device - Bearing: | None |
| | 14.400 A @ 230.0 V | Thermal Device - Winding: | Normally Closed Thermostat |
| | 11.900 A @ 190.0 V | Vibration Sensor Indicator: | No Vibration Sensor |
| Design Code: | A | Winding Thermal 1: | None |
| Drip Cover: | No Drip Cover | Winding Thermal 2: | None |
| | | XP Temp Code: | T3C |

| Nameplate NP0887XPSLEV | | | | | | | | | |
|------------------------|--------------------|---------------------|---|-------|---------------------|----------|------|----------|----|
| NO. | | | | | CC | 010A | | | |
| S/N | | | | | TEMP CODE | T3C | | | |
| SPEC. | 37-0000-0042 | | | | INV.TYPE | PWM | | | |
| CAT.NO. | XM21562T | | | | C HP FR | 60 | | C HP TO | 90 |
| HP | 5/3 | | | | CT HZ FROM | 6 | | CT HZ TO | 60 |
| VOLTS | 230/460//190/380 | | | | VT HZ FROM | 6 | | VT HZ TO | 60 |
| AMPS | 14.4/7.2//11.9/5.9 | | | | MAG CUR | 8/4 | | | |
| RPM | 1165//975 | | | | MX RPM | 1800 | | | |
| HZ | 60//50 | PH | 3 | CL | F | NOM.EFF. | 89.5 | | |
| SER.F. | 1.00 | DES | A | SL HZ | 1.8 | WK2 | 1.29 | | |
| FRAME | 215T | RATING 40C AMB-CONT | | | | | | | |
| | 55C AMB @ 1.0 SF | | | | | | | | |
| | 1.15 SF SINEWAVE | | | | NEMA MG-1 PT 5,IP54 | | | | |
| | | | | | | | | | |

| Parts List | | |
|---------------|--|----------|
| Part Number | Description | Quantity |
| SA368115 | SA 37-0000-0042 | 1.000 EA |
| RA357607 | RA 37-0000-0042 | 1.000 EA |
| LB1119N | WARNING LABEL | 1.000 EA |
| LB1115N | LABEL,LIFTING DEVICE (ON ROLLS) | 1.000 EA |
| LC0145B01 | CONNECTION LABEL | 1.000 EA |
| NP0887XPSLEV | SS XP INV UL CSA-EEV CC CL-I GP-D | 1.000 EA |
| 85XU0407S04 | 4X1/4 U DRIVE PIN STAINLESS | 2.000 EA |
| 85XU0407S04 | 4X1/4 U DRIVE PIN STAINLESS | 4.000 EA |
| MN416A01 | TAG-INSTAL-MAINT no wire (2100/bx) 4/22 | 1.000 EA |
| NP0018F | ALUM UL XP CONDUIT BOX NAMEPLATE | 1.000 EA |
| 37FH4000A09 | FAN COVER, W/ PRIMER | 1.000 EA |
| 51XW1032A06 | 10-32 X .38, TAPTITE II, HEX WSHR SLTD S | 3.000 EA |
| 37FN3002A01SP | EXFN, PLASTIC, 9.00 OD, 1.155 ID | 1.000 EA |
| 51XB1214A20 | 12-14X1.25 HXWSSLD SERTYB | 1.000 EA |
| MJ1000A02 | GREASE, MOBIL POLYREX EM - 124047 | 0.050 LB |
| HA3106A06 | THRUBOLT- 1/2-13 X 13.375TDR#32325 | 4.000 EA |
| 37EP1704A01 | FR ENDPLATE, TEFC, CAST IRON, MACHINED | 1.000 EA |
| HW5100A06 | W2420-025 WVY WSHR (WB) | 1.000 EA |
| HW4500A01 | 1641B(ALEMITE)400 UNIV, GREASE FITT | 1.000 EA |
| HW4500A19 | 1/4-28X1/4 SLOTTED PLUG F/S | 1.000 EA |
| 37EP1701A02 | PU ENDPLATE,TEFC, 1 FAN, W/GREASER, MACH | 1.000 EA |
| HW4500A01 | 1641B(ALEMITE)400 UNIV, GREASE FITT | 1.000 EA |
| HW4500A19 | 1/4-28X1/4 SLOTTED PLUG F/S | 1.000 EA |
| 35CB3001A02SP | EXPL PROOF CONDUIT BOX, 3/4"PIPE TAP LEA | 1.000 EA |

| Parts List (continued) | | |
|-------------------------------|--|-----------------|
| Part Number | Description | Quantity |
| 11XW1032G06 | 10-32 X .38, TAPTITE II, HEX WSHR SLTD U | 1.000 EA |
| HW3001B01 | BRASS CUP WASHER, FOR #10 SCREW | 1.000 EA |
| 35CB3500A01SP | CONDUIT BOX LID, MACH | 1.000 EA |
| 51XN2520A16 | SCREW, HEX WS SLT, ZN, 1/4-20 X 1.00 | 4.000 EA |
| MG1500Y02 | WILKOPON PRIMER YELLOW | 0.001 GA |
| MG1025G29 | WILKOFASST, 789.229, DARK CHARCOAL GRAY | 0.022 GA |
| 37PA1074 | PALLET PACK GRP, PRINT BOX PK1026A06 | 1.000 EA |
| HW2501F21 | KEY, 5/16 SQ X 2.375 | 1.000 EA |
| HA7000A02 | KEY RETAINER RING, 1 1/8 DIA, 1 3/8 DIA | 1.000 EA |

AC Induction Motor Performance Data

Record # 73678

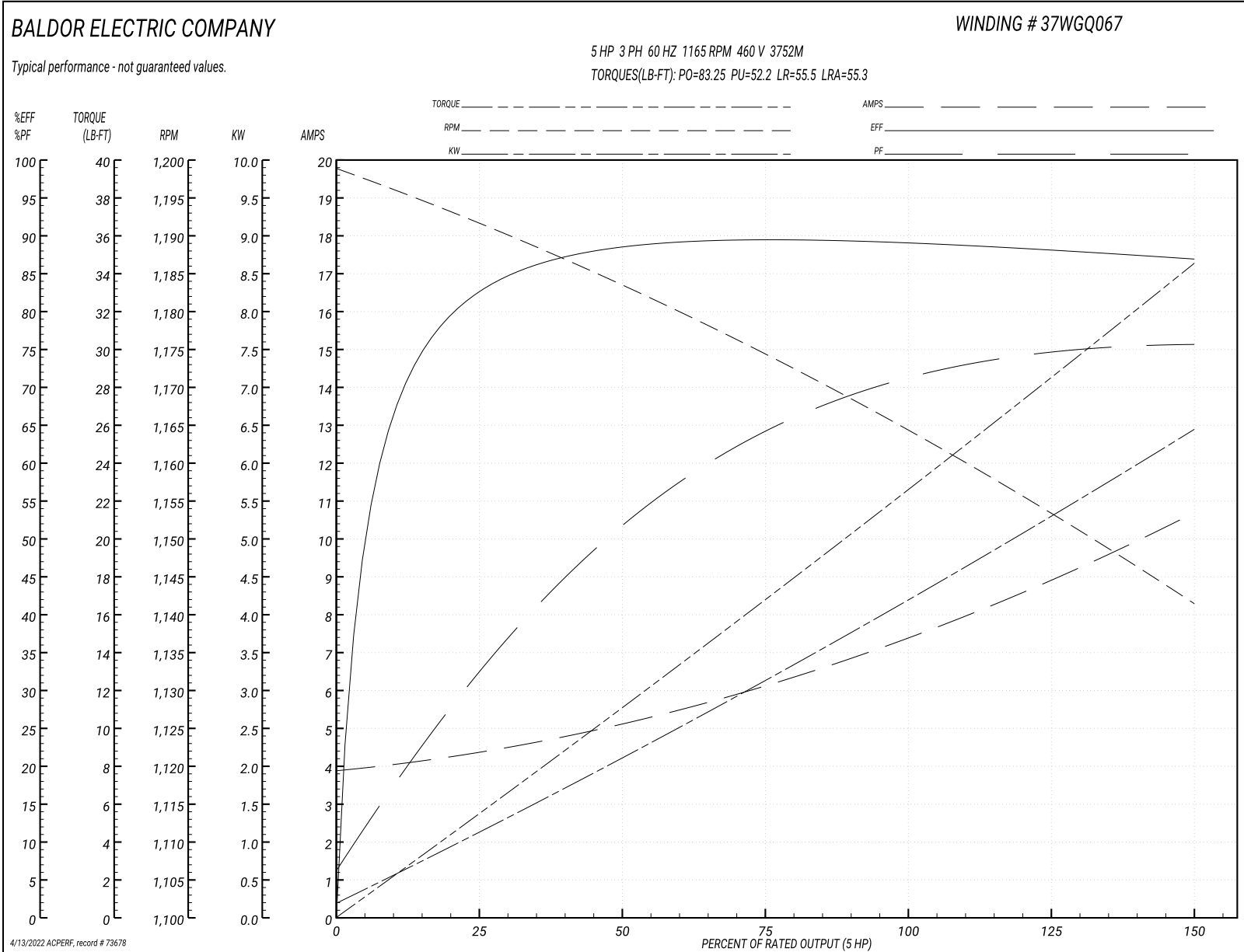
Typical performance - not guaranteed values

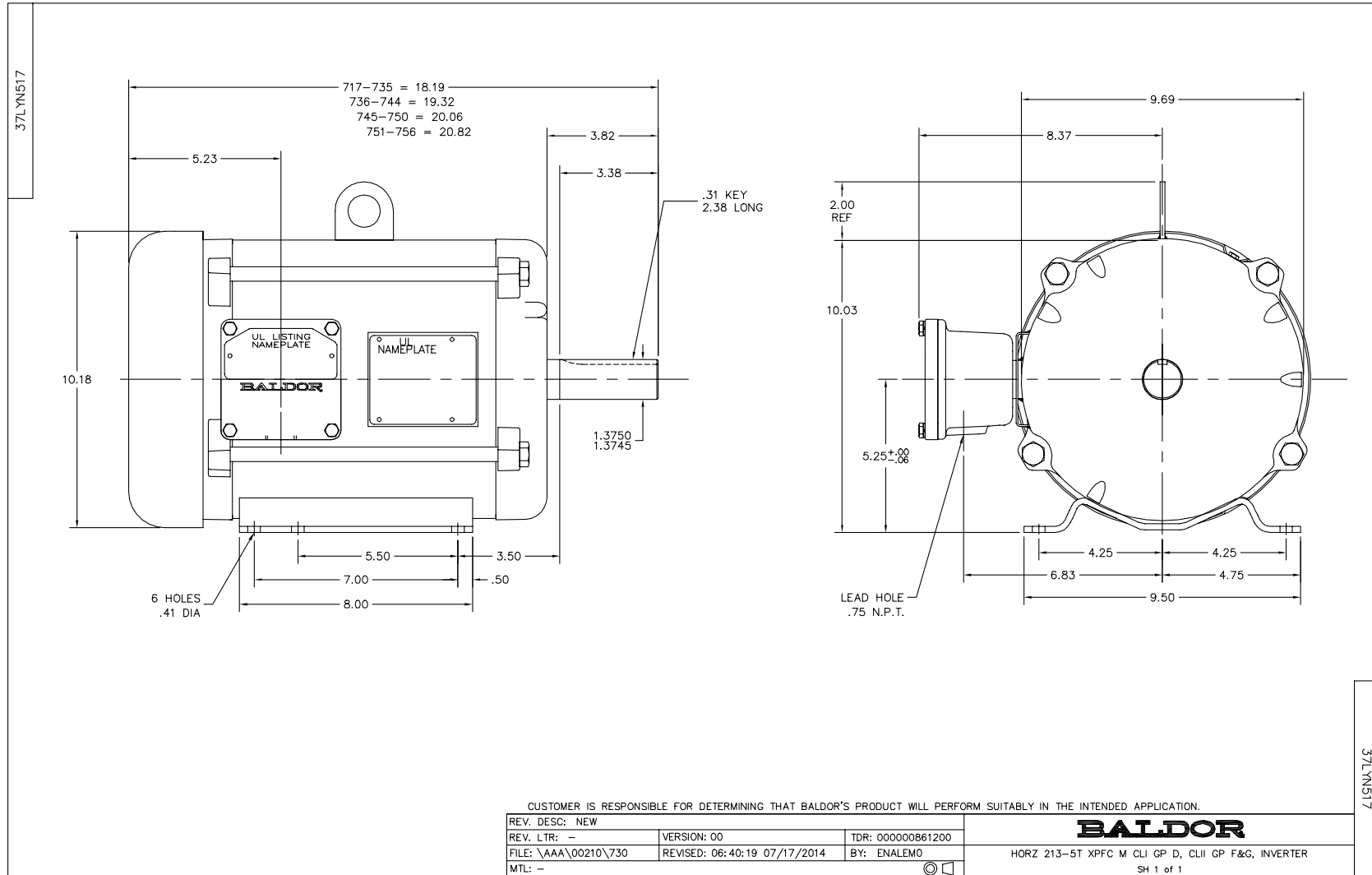
| Winding: 37WGQ067-R008 | | Type: 3752M | | Enclosure: XPFC | |
|-------------------------------|--------------------|---------------------|--|----------------------------------|-------------------------|
| Nameplate Data | | | 460 V, 60 Hz: High Voltage Connection | | |
| Rated Output (HP) | 5//3 | | Full Load Torque | 22.58 LB-FT | |
| Volts | 230/460//190/380 | | Start Configuration | direct on line | |
| Full Load Amps | 14.4/7.2//11.9/5.9 | | Breakdown Torque | 83.25 LB-FT | |
| R.P.M. | 1165//975 | | Pull-up Torque | 52.2 LB-FT | |
| Hz | 60//50 | Phase | 3 | Locked-rotor Torque | 55.5 LB-FT |
| NEMA Design Code | A KVA Code | | K | Starting Current | 55.3 A |
| Service Factor (S.F.) | | | 1 | No-load Current | 3.96 A |
| NEMA Nom. Eff. | 89.5 | Power Factor | 71 | Line-line Res. @ 25°C | 1.65 Ω |
| Rating - Duty | 40C AMB-CONT | | | Temp. Rise @ Rated Load | 61°C |
| | | | | Locked-rotor Power Factor | 21.9 |
| | | | | Rotor inertia | 1.29 LB-FT ² |

Load Characteristics 460 V, 60 Hz, 5 HP

| % of Rated Load | 25 | 50 | 75 | 100 | 125 | 150 |
|------------------------|-----------|-----------|-----------|------------|------------|------------|
| Power Factor | 33 | 53 | 64 | 71 | 74 | 76 |
| Efficiency | 82.1 | 88.2 | 89.3 | 89.2 | 88.3 | 86.8 |
| Speed | 1192 | 1183 | 1174 | 1165 | 1154 | 1141 |
| Line amperes | 4.26 | 5.06 | 6.15 | 7.44 | 8.92 | 10.65 |

Performance Graph at 460V, 60Hz, 5.0HP Typical performance - Not guaranteed values





CD0005

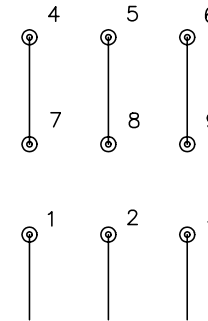


LOW VOLTAGE
(2Y)



LINE

HIGH VOLTAGE
(1Y)



LINE

NOTES:

1. INTERCHANGE ANY TWO LINE LEADS TO REVERSE ROTATION.
2. OPTIONAL THERMOSTATS ARE PROVIDED WHEN SPECIFIED.
3. ACTUAL NUMBER OF INTERNAL PARALLEL CIRCUITS MAY BE A MULTIPLE OF THOSE SHOWN ABOVE.
4. LEAD COLORS ARE OPTIONAL. LEADS MUST ALWAYS BE NUMBERED AS SHOWN.

REV. DESC: REVISE TO SHOW OPTIONAL COLORS

REV. LTR: E BY: JLP

REVISED: 01/19/99 10:15

TDR: 0171435

900003

FILE: AAA00005140

MDL: -

MTL: -

BALDOR ELECTRIC Co.

3PH, DV, 9 LEADS

CD0005

Marketing maintained PDF of MN416:

<http://www.baldor.com/support/Literature/Load.ashx/MN416?ManNumber=MN416>