

**BALDOR® • RELIANCE** 

**Product Information Packet**

**XM251542T**

**15//10HP,1765//1470RPM,3PH,60//50HZ,254T**

Part Detail							
Revision:	B	Status:	PRD/A	Change #:		Proprietary:	No
Type:	AC	Elec. Spec:	09WGT597	CD Diagram:	CD0005	Mfg Plant:	
Mech. Spec:	09E270	Layout:	09LYE270	Poles:	04	Created Date:	02-02-2021
Base:	RG	Eff. Date:	12-08-2021	Leads:	9#12		

Specs			
Catalog Number:	XM251542T	Feedback Device:	NO FEEDBACK
Enclosure:	XPFC	Front Shaft Indicator:	None
Frame:	254T	Heater Indicator:	No Heater
Frame Material:	Iron	Insulation Class:	F
Output @ Frequency:	10.000 HP @ 50 HZ	Inverter Code:	Inverter Duty
	15.000 HP @ 60 HZ	IP Rating:	NONE
Synchronous Speed @ Frequency:	1800 RPM @ 60 HZ	KVA Code:	H
Voltage @ Frequency:	380.0 V @ 50 HZ	Lifting Lugs:	Standard Lifting Lugs
	230.0 V @ 60 HZ	Locked Bearing Indicator:	Locked Bearing
	190.0 V @ 50 HZ	Motor Lead Quantity/Wire Size:	9 @ 12 AWG
	460.0 V @ 60 HZ	Motor Lead Termination:	Flying Leads
XP Class and Group:	CLI GP D; CLII GP F,G	Motor Type:	X0944M
XP Division:	Division I	Mounting Arrangement:	F1
Agency Approvals:	UR	Power Factor:	84
	CSA EEV	Product Family:	Hazardous Location Motor
	CSA	Pulley End Bearing Type:	Ball
Auxillary Box:	No Auxillary Box	Pulley Face Code:	Standard
Auxillary Box Lead Termination:	None	Pulley Shaft Indicator:	None

<b>Base Indicator:</b>	Rigid	<b>Rodent Screen:</b>	None
<b>Bearing Grease Type:</b>	Polyrex EM (-20F +300F)	<b>RoHS Status:</b>	ROHS NON-COMPLIANT
<b>Blower:</b>	None	<b>Shaft Ground Indicator:</b>	No Shaft Grounding
<b>Constant Torque Speed Range:</b>	6	<b>Shaft Rotation:</b>	Reversible
<b>Current @ Voltage:</b>	38.000 A @ 208.0 V	<b>Shaft Slinger Indicator:</b>	No Slinger
	36.200 A @ 230.0 V	<b>Speed Code:</b>	Single Speed
	30.400 A @ 190.0 V	<b>Motor Standards:</b>	NEMA
	18.100 A @ 460.0 V	<b>Starting Method:</b>	Direct on line
	15.100 A @ 380.0 V	<b>Thermal Device - Bearing:</b>	None
<b>Design Code:</b>	A	<b>Thermal Device - Winding:</b>	Normally Closed Thermostat
<b>Drip Cover:</b>	No Drip Cover	<b>Vibration Sensor Indicator:</b>	No Vibration Sensor
<b>Duty Rating:</b>	CONT	<b>Winding Thermal 1:</b>	None
<b>Electrically Isolated Bearing:</b>	Not Electrically Isolated	<b>Winding Thermal 2:</b>	None
		<b>XP Temp Code:</b>	T3C

Nameplate NP0887XPSLEV									
NO.					CC	010A			
S/N					TEMP CODE	T3C			
SPEC.	09E270T597G3				INV.TYPE	PWM			
CAT.NO.	XM251542T				C HP FR	60		C HP TO	90
HP	15//10				CT HZ FROM	6		CT HZ TO	60
VOLTS	230/460//190/380				VT HZ FROM	6		VT HZ TO	60
AMPS	36.2/18.1//30.4/15.1				MAG CUR	14.6/7.3			
RPM	1765//1470				MX RPM	2700			
HZ	60//50	PH	3	CL	F	NOM.EFF.	92.4		
SER.F.	1.15	DES	A	SL HZ	1.2	WK2	1.93		
FRAME	254T	RATING	40C AMB-CONT						
55C AMB @1.0SF ON VFD,60C RISE									
NEMA MG-1 PT.5,IP54									

Parts List		
Part Number	Description	Quantity
SA390529	SA 09E270T597G3	1.000 EA
RA380981	RA 09E270T597G3	1.000 EA
MJ5000A09	EFI KIT #1578 (400 ML CARTRIDGE OF EFI	0.031 EA
09CB1000A57	CONDUIT BOX, MACH	1.000 EA
10XN3118K16	5/16-18 X 1' GRADE #5, STL, ZINC PLATE	4.000 EA
HW1001A31	LOCKWASHER 5/16, ZINC PLT.591 OD, .319 I	4.000 EA
WD1000B25	GND LUG, BURNDY L125HP OR T&B L125HP-BB	1.000 EA
19XW3118G08	.31-18X.50,HEX WSHR HD,TAPTITE 2,GREEN	1.000 EA
HW1001A25	LOCKWASHER 1/4, ZINC PLT .493 OD, .255 I	1.000 EA
09EP1700A01	FR ENDPLATE, MACH	1.000 EA
10XN3816K28	3/8-16 X 1.75 HEX HD CAP SCREW, GRADE 5	4.000 EA
HW1001A38	LOCKWASHER 3/8, ZINC PLT .688 OD, .382 I	4.000 EA
HW5100A08	W3118-035 WVY WSHR (WB)	1.000 EA
HA2002A05	SPACER, #208 BRG	1.000 EA
10XN2520K36	1/4-20 X 2.25" HX HD SCRWGRADE 5, ZINC P	4.000 EA
09EP1707A01	PU ENDPLATE, MACH	1.000 EA
10XN3816K28	3/8-16 X 1.75 HEX HD CAP SCREW, GRADE 5	4.000 EA
HW1001A38	LOCKWASHER 3/8, ZINC PLT .688 OD, .382 I	4.000 EA
09FH1004A01	FAN COVER, MACH	1.000 EA
10XN2520K14	1/4-20 X .88 HEX GRD 5 (20001)	3.000 EA
HW1001A25	LOCKWASHER 1/4, ZINC PLT .493 OD, .255 I	3.000 EA
09CB1500A01SP	CONDUIT BOX LID, MACH	1.000 EA
10XN2520K16	1/4-20 X 1" HX HD SCRW GRADE 5, ZINC P	6.000 EA
HW1001A25	LOCKWASHER 1/4, ZINC PLT .493 OD, .255 I	6.000 EA

Parts List (continued)		
Part Number	Description	Quantity
HW2501G25	KEY, 3/8 SQ X 2.875	1.000 EA
LB1115N	LABEL,LIFTING DEVICE (ON ROLLS)	1.000 EA
LB1073	ALUM XP CAUTION LABEL	1.000 EA
MJ5001A27	32220KN GRAY SEALER *MIN BUY 4 QTS=1GAL	0.001 QT
HW4500A20	1/8NPT SL PIPE PLUG	2.000 EA
MJ1000A02	GREASE, MOBIL POLYREX EM - 124047	0.080 LB
HW4500A20	1/8NPT SL PIPE PLUG	2.000 EA
09FN3001D01SP	EXTERNAL FAN, PLASTIC (COMES W/SCREW FRO	1.000 EA
HW2500A25	WOODRUFF KEY USA #1008 #BLOW CARBON STEE	1.000 EA
MG1025G29	WILKOFAS, 789.229, DARK CHARCOAL GRAY	0.050 GA
85XU0407S04	4X1/4 U DRIVE PIN STAINLESS	6.000 EA
LB1119N	WARNING LABEL	1.000 EA
LC0145B01	CONNECTION LABEL	1.000 EA
NP0887XPSLEV	SS XP INV UL CSA-EEV CC CL-I GP-D	1.000 EA
40PA1005	PACKAGING GROUP, 09 STD	1.000 EA
MN416A01	TAG-INSTAL-MAINT no wire (2100/bx) 4/22	1.000 EA
LD7020D09	LEAD SET, 12AWG, 9 LEAD, 20" LONG LEADS	1.000 EA

**AC Induction Motor Performance Data**

Record # 86566

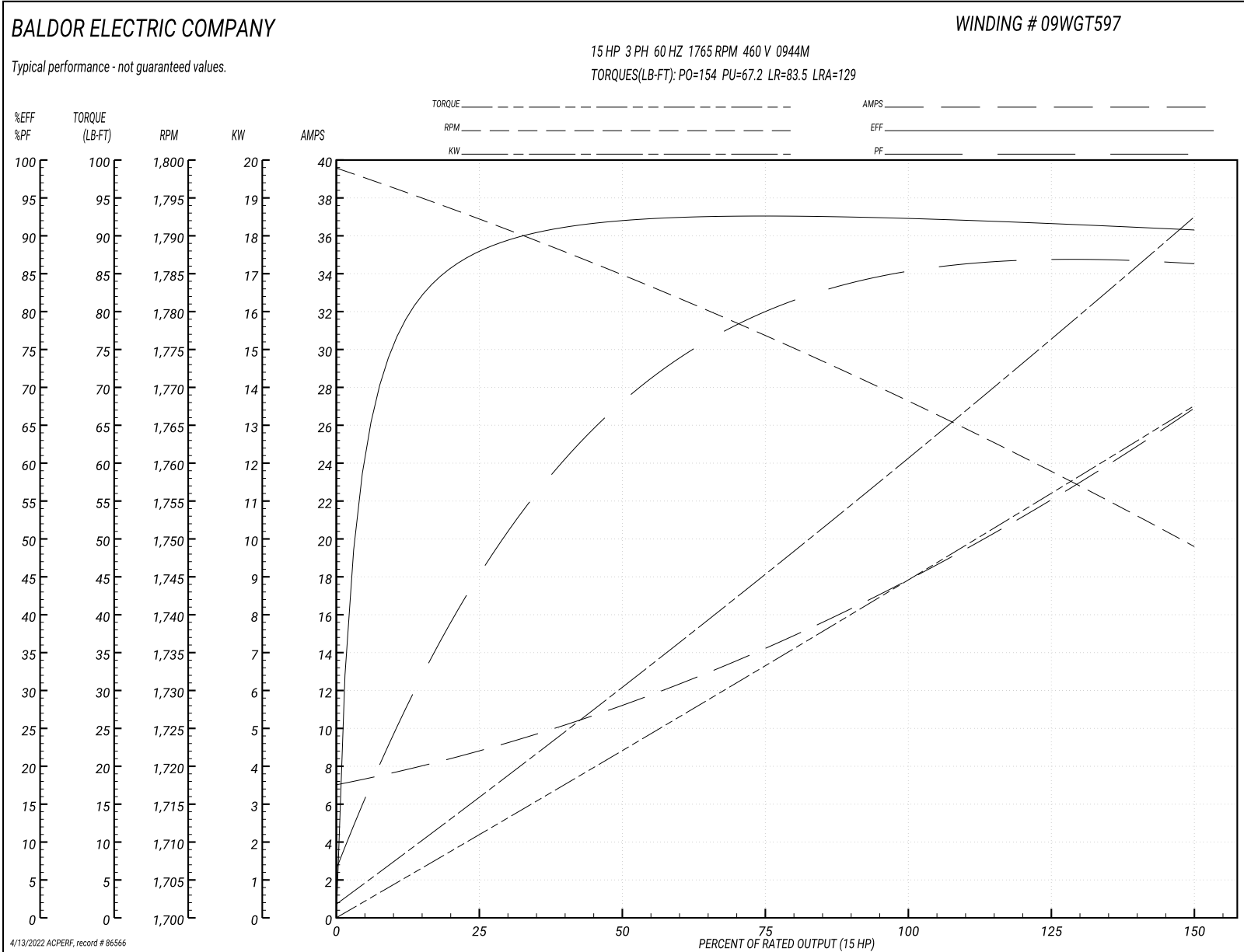
Preliminary Data Sheet

<b>Winding: 09WGT597-R012</b>		<b>Type: 0944M</b>		<b>Enclosure: XPFC</b>	
<b>Nameplate Data</b>			<b>460 V, 60 Hz: High Voltage Connection</b>		
<b>Rated Output (HP)</b>	15	<b>Full Load Torque</b>	44.5 LB-FT		
<b>Volts</b>	230/460	<b>Start Configuration</b>	direct on line		
<b>Full Load Amps</b>	36.2/18.1	<b>Breakdown Torque</b>	154 LB-FT		
<b>R.P.M.</b>	1765	<b>Pull-up Torque</b>	67.2 LB-FT		
<b>Hz</b>	60 <b>Phase</b>	3	<b>Locked-rotor Torque</b>	83.5 LB-FT	
<b>NEMA Design Code</b>	A <b>KVA Code</b>	H	<b>Starting Current</b>	129 A	
<b>Service Factor (S.F.)</b>	1.15	<b>No-load Current</b>	7.32 A		
<b>NEMA Nom. Eff.</b>	92.4 <b>Power Factor</b>	84	<b>Line-line Res. @ 25°C</b>	0.61 Ω	
<b>Rating - Duty</b>	40C AMB-CONT	<b>Temp. Rise @ Rated Load</b>	52°C		
<b>S.F. Amps</b>	41/20.5	<b>Temp. Rise @ S.F. Load</b>	67°C		
		<b>Locked-rotor Power Factor</b>	38.1		
		<b>Rotor inertia</b>	1.92 lb-ft <sup>2</sup>		

**Load Characteristics 460 V, 60 Hz, 15 HP**

<b>% of Rated Load</b>	<b>25</b>	<b>50</b>	<b>75</b>	<b>100</b>	<b>125</b>	<b>150</b>	<b>S.F.</b>
<b>Power Factor</b>	48	69	79	84	86	87	86
<b>Efficiency</b>	88	92.1	92.7	92.5	91.7	90.7	91.9
<b>Speed</b>	1792	1785	1777	1768	1759	1749	1761
<b>Line amperes</b>	8.45	11	14.3	18.1	22.2	26.7	20.5

Performance Graph at 460V, 60Hz, 15.0HP Typical performance - Not guaranteed values





**AC Induction Motor Performance Data**

Record # 86567

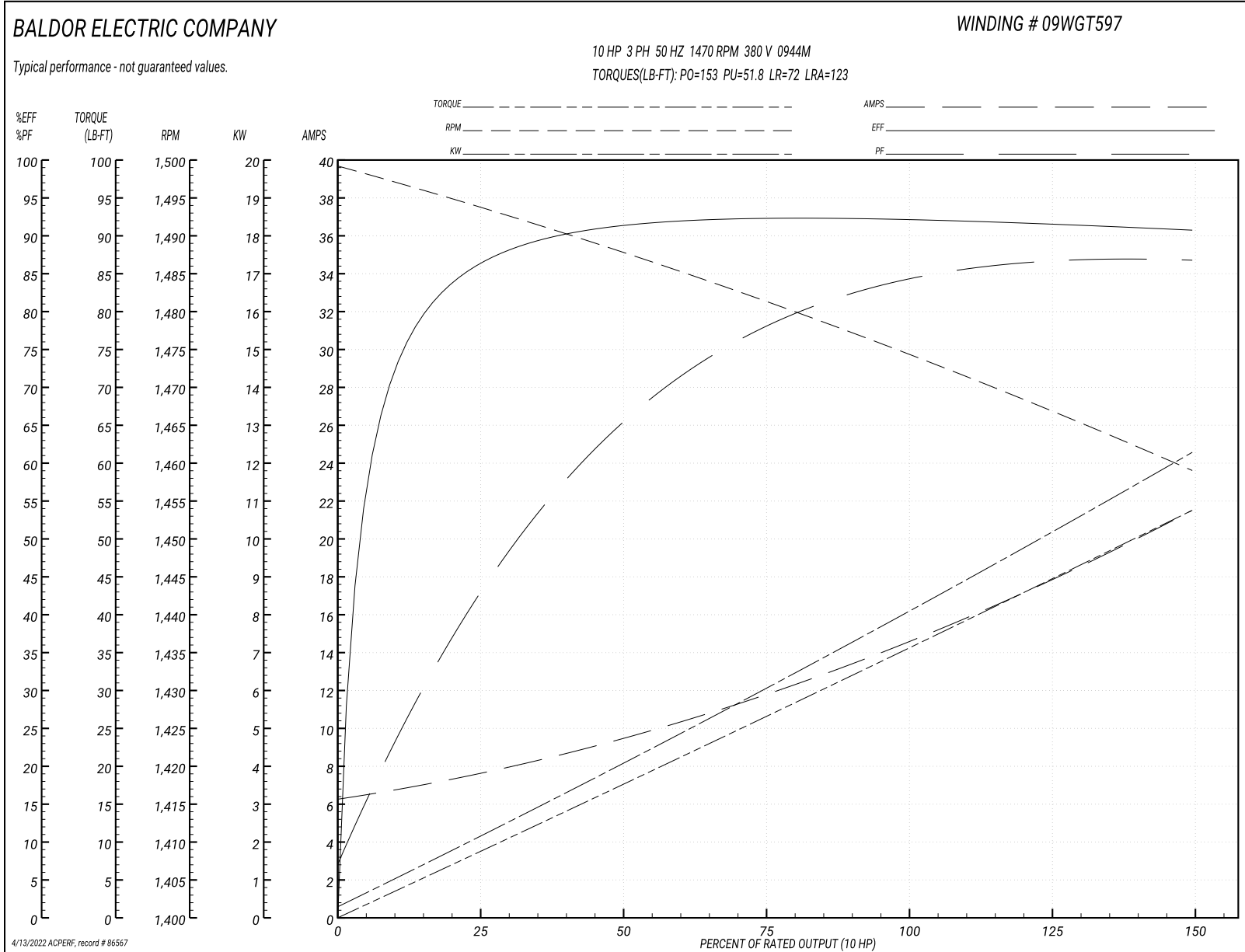
Preliminary Data Sheet

<b>Winding: 09WGT597-R012</b>			<b>Type: 0944M</b>			<b>Enclosure: XPFC</b>		
<b>Nameplate Data</b>				<b>380 V, 50 Hz: High Voltage Connection</b>				
<b>Rated Output (HP)</b>	10		<b>Full Load Torque</b>	35.7 LB-FT				
<b>Volts</b>	190/380		<b>Start Configuration</b>	direct on line				
<b>Full Load Amps</b>	30.2/15.1		<b>Breakdown Torque</b>	153 LB-FT				
<b>R.P.M.</b>	1470		<b>Pull-up Torque</b>	51.8 LB-FT				
<b>Hz</b>	50	<b>Phase</b>	3	<b>Locked-rotor Torque</b>	72 LB-FT			
<b>NEMA Design Code</b>	A	<b>KVA Code</b>	K	<b>Starting Current</b>	123 A			
<b>Service Factor (S.F.)</b>	1.15		<b>No-load Current</b>	6.49 A				
<b>NEMA Nom. Eff.</b>	91	<b>Power Factor</b>	81	<b>Line-line Res. @ 25°C</b>	0.61 Ω			
<b>Rating - Duty</b>	40C AMB-CONT		<b>Temp. Rise @ Rated Load</b>	35°C				
<b>S.F. Amps</b>	33.2/16.6		<b>Temp. Rise @ S.F. Load</b>	45°C				
			<b>Locked-rotor Power Factor</b>	38.1				
			<b>Rotor inertia</b>	1.92 lb-ft <sup>2</sup>				

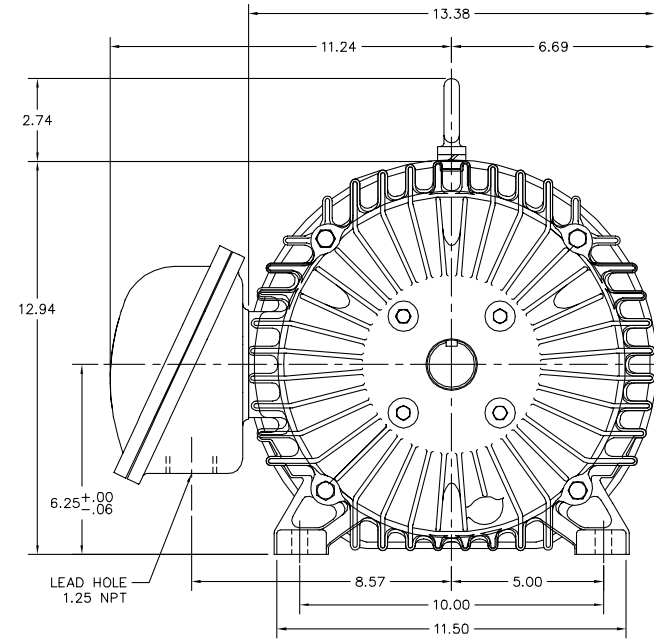
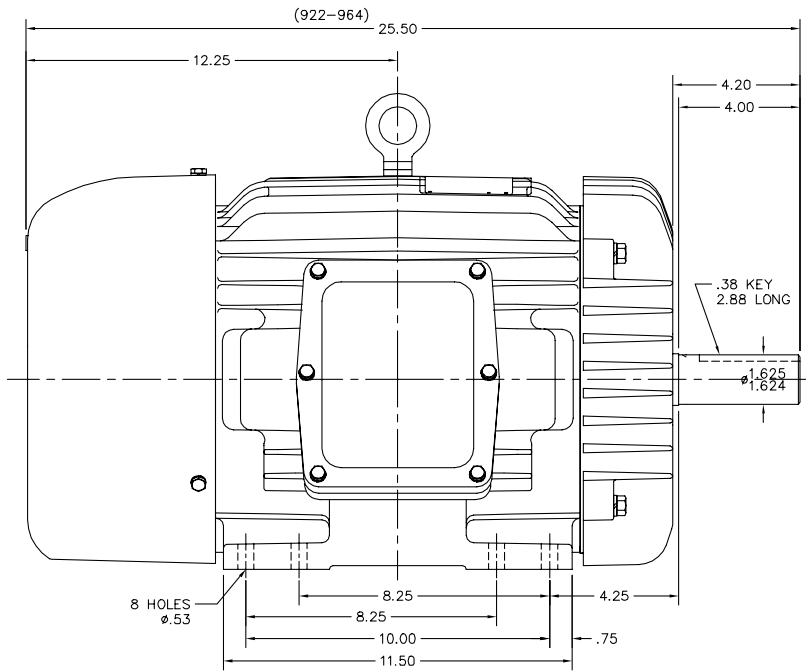
**Load Characteristics 380 V, 50 Hz, 10 HP**

<b>% of Rated Load</b>	<b>25</b>	<b>50</b>	<b>75</b>	<b>100</b>	<b>125</b>	<b>150</b>	<b>S.F.</b>
<b>Power Factor</b>	45	67	78	84	86	87	85
<b>Efficiency</b>	86	91.1	92.2	92.2	91.7	90.9	91.9
<b>Speed</b>	1494	1488	1481	1474	1467	1459	1469
<b>Line amperes</b>	7.36	9.3	11.9	14.9	17.9	21.4	16.6

Performance Graph at 380V, 50Hz, 10.0HP Typical performance - Not guaranteed values



09LYE270



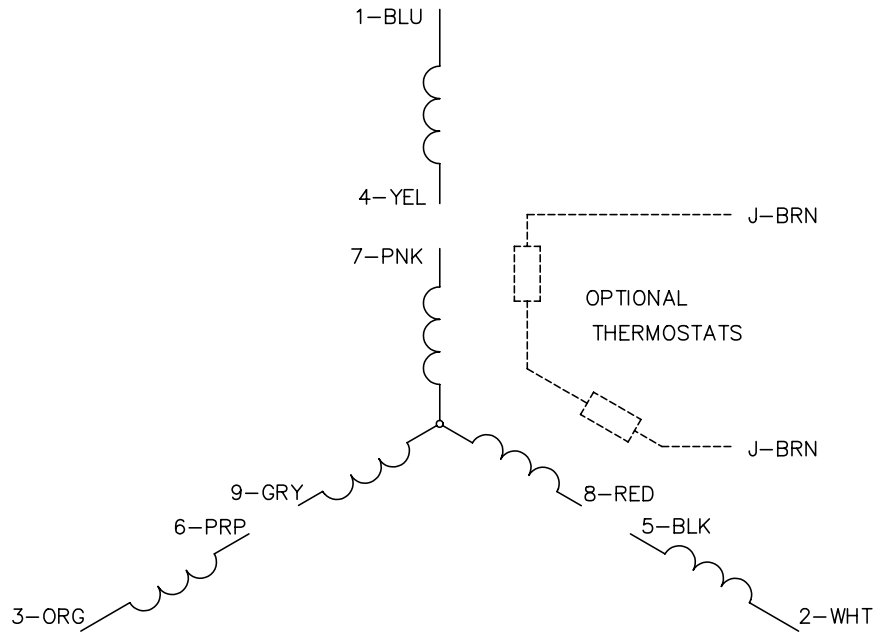
09LYE270

CUSTOMER IS RESPONSIBLE FOR DETERMINING THAT THE PRODUCT WILL PERFORM SUITABLY IN THE INTENDED APPLICATION.

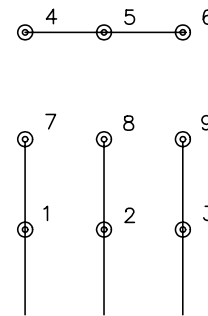
REV. DESC: REPLACE RB1062A02 W/RB062A04	VERSION: 06	TDR: 000001182213
REV. LTR: J	REvised: 01:48:53 12/01/2021	BY: USSTBUR3
FILE: \AAA\00000\626		
MTL: -		

**BALDOR - RELIANCE**<sup>®</sup>  
 HORZ XPFC 254-6T CL.I GP.D,CL.II GP.F&G  
 SH 1 of 1

CD0005

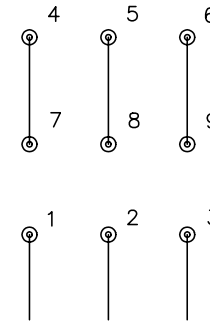


LOW VOLTAGE  
(2Y)



LINE

HIGH VOLTAGE  
(1Y)



LINE

NOTES:

1. INTERCHANGE ANY TWO LINE LEADS TO REVERSE ROTATION.
2. OPTIONAL THERMOSTATS ARE PROVIDED WHEN SPECIFIED.
3. ACTUAL NUMBER OF INTERNAL PARALLEL CIRCUITS MAY BE A MULTIPLE OF THOSE SHOWN ABOVE.
4. LEAD COLORS ARE OPTIONAL. LEADS MUST ALWAYS BE NUMBERED AS SHOWN.

REV. DESC: REVISE TO SHOW OPTIONAL COLORS			
REV. LTR: E	BY: JLP	REVISED: 01/19/99 10:15	TDR: 0171435
90000		FILE: AAA00005140	MDL: -
		MTL: -	

**BALDOR ELECTRIC Co.**

3PH, DV, 9 LEADS

CD0005

Marketing maintained PDF of MN416:

<http://www.baldor.com/support/Literature/Load.ashx/MN416?ManNumber=MN416>