

**BALDOR® • RELIANCE** 

**Product Information Packet**

**XM281562T**

**15//10HP,1175//985RPM,3PH,60//50HZ,284T**

Part Detail							
Revision:	-	Status:	PRD/A	Change #:		Proprietary:	No
Type:	AC	Elec. Spec:	10WGY561	CD Diagram:	CD0180	Mfg Plant:	
Mech. Spec:		Layout:	10LYE106	Poles:	06	Created Date:	03-23-2021
Base:		Eff. Date:	04-09-2021	Leads:	9#10		

Specs			
Catalog Number:	XM281562T	Drip Cover:	No Drip Cover
Enclosure:	XPFC	Duty Rating:	CONT
Frame:	284T	Electrically Isolated Bearing:	Not Electrically Isolated
Frame Material:	Iron	Feedback Device:	NO FEEDBACK
Output @ Frequency:	15.000 HP @ 60 HZ	Heater Indicator:	No Heater
	10.000 HP @ 50 HZ	Insulation Class:	F
Synchronous Speed @ Frequency:	1200 RPM @ 60 HZ	Inverter Code:	Inverter Duty
Voltage @ Frequency:	190.0 V @ 50 HZ	IP Rating:	NONE
	230.0 V @ 60 HZ	KVA Code:	H
	380.0 V @ 50 HZ	Lifting Lugs:	Standard Lifting Lugs
	460.0 V @ 60 HZ	Locked Bearing Indicator:	Locked Bearing
XP Class and Group:	CLI GP D; CLII GP F,G	Motor Lead Termination:	Flying Leads
XP Division:	Division I	Motor Type:	1046M
Agency Approvals:	UR	Mounting Arrangement:	F1
	CSA EEV	Power Factor:	73
	CSA	Product Family:	Hazardous Location Motor
Auxillary Box:	No Auxillary Box	Pulley Face Code:	Standard
Auxillary Box Lead Termination:	None	Rodent Screen:	None

<b>Base Indicator:</b>	Rigid	<b>Shaft Ground Indicator:</b>	No Shaft Grounding
<b>Bearing Grease Type:</b>	Polyrex EM (-20F +300F)	<b>Shaft Rotation:</b>	Reversible
<b>Blower:</b>	None	<b>Speed Code:</b>	Single Speed
<b>Constant Torque Speed Range:</b>	6	<b>Motor Standards:</b>	NEMA
<b>Current @ Voltage:</b>	42.000 A @ 230.0 V	<b>Starting Method:</b>	Direct on line
	42.000 A @ 208.0 V	<b>Thermal Device - Bearing:</b>	None
	36.000 A @ 190.0 V	<b>Thermal Device - Winding:</b>	Normally Closed Thermostat
	21.000 A @ 460.0 V	<b>Vibration Sensor Indicator:</b>	No Vibration Sensor
	18.000 A @ 380.0 V	<b>Winding Thermal 1:</b>	None
<b>Design Code:</b>	A	<b>Winding Thermal 2:</b>	None
		<b>XP Temp Code:</b>	T3C

Nameplate NP0887XPSLEV										
NO.						CC	010A			
S/N						TEMP CODE	T3C			
SPEC.	10-0000-2030					INV.TYPE	PWM			
CAT.NO.	XM281562T					C HP FR	60		C HP TO	90
HP	15//10					CT HZ FROM	6		CT HZ TO	60
VOLTS	230/460//190/380					VT HZ FROM	6		VT HZ TO	60
AMPS	42/21//36/18					MAG CUR	22/11			
RPM	1175//985					MX RPM	1800			
HZ	60//50	PH	3	CL	F	NOM.EFF.	91.7			
SER.F.	1.00		DES	A	SL HZ	1.3		WK2	4.9	
FRAME	284T		RATING	40C AMB-CONT						
NEMA MG-1 PART 5, IP54										
1.15 SF ON SINE WAVE										

Parts List		
Part Number	Description	Quantity
SA392431	SA 10-0000-2030	1.000 EA
RA382987	RA 10-0000-2030	1.000 EA
LB1115N	LABEL,LIFTING DEVICE (ON ROLLS)	1.000 EA
LB1119N	WARNING LABEL	1.000 EA
LC0181	CONNECTION LABEL	1.000 EA
NP0887XPSLEV	SS XP INV UL CSA-EEV CC CL-I GP-D	1.000 EA
85XU0407S04	4X1/4 U DRIVE PIN STAINLESS	2.000 EA
85XU0407S04	4X1/4 U DRIVE PIN STAINLESS	4.000 EA
MN416A01	TAG-INSTAL-MAINT no wire (2100/bx) 4/22	1.000 EA
LB1073	ALUM XP CAUTION LABEL	1.000 EA
10FH1008A01	310 FAN HOUSING X-PROOF MACH.	1.000 EA
HW1001A31	LOCKWASHER 5/16, ZINC PLT.591 OD, .319 I	3.000 EA
10XN3118K12	5/16-18 X .75 GRADE 5, ZINC PLATED	3.000 EA
09FN3001B02	EXTERNAL FAN, PLASTIC (COMES W/SCREW FRO	1.000 EA
HW2500A25	WOODRUFF KEY USA #1008 #BLOW CARBON STEE	1.000 EA
MJ1000A02	GREASE, MOBIL POLYREX EM - 124047	0.130 LB
WD4100A03	DE-750 HEYCO PLUG 62MP0750 MICRO PLASTIC	1.000 EA
10EP1701A01	FR ENDPLATE, MACH	1.000 EA
HA3050A03	3/8-16 X 2.25" GRADE 8 BOLT	4.000 EA
HW1001A38	LOCKWASHER 3/8, ZINC PLT .688 OD, .382 I	4.000 EA
HW5100A11	W3917-042 WVY WSHR (WB)	1.000 EA
HW4500A20	1/8NPT SL PIPE PLUG	1.000 EA
HW4500A20	1/8NPT SL PIPE PLUG	1.000 EA
10EP1709A08	PU ENDPLATE, X-PROOF W/LABYRINTH SHAFT G	1.000 EA

Parts List (continued)		
Part Number	Description	Quantity
HW1001A38	LOCKWASHER 3/8, ZINC PLT .688 OD, .382 I	4.000 EA
HA3050A03	3/8-16 X 2.25" GRADE 8 BOLT	4.000 EA
10XN2520K40	1/4-20 X 2-1/2 HEX HD CAPSCREW, GRADE 5,Z	4.000 EA
HW1001A25	LOCKWASHER 1/4, ZINC PLT .493 OD, .255 I	4.000 EA
HW4500A20	1/8NPT SL PIPE PLUG	1.000 EA
HW4500A20	1/8NPT SL PIPE PLUG	1.000 EA
12CB1001A01	K.O.BOX, MACH X-PROOF, 1.50 NPT HOLE	1.000 EA
10XN3118K16	5/16-18 X 1' GRADE #5, STL, ZINC PLATE	4.000 EA
HW1001A31	LOCKWASHER 5/16, ZINC PLT.591 OD, .319 I	4.000 EA
WD1000B25	GND LUG, BURNDY L125HP OR T&B L125HP-BB	1.000 EA
19XW3118G08	.31-18X.50,HEX WSHR HD,TAPTITE 2,GREEN	1.000 EA
12CB1501A01	COND.BOX LID, MACH., X-PROOF, 310,312	1.000 EA
10XN3816K20	3/8-16 X 1.25 HEX HD CAP GRADE 5	6.000 EA
HW1001A38	LOCKWASHER 3/8, ZINC PLT .688 OD, .382 I	6.000 EA
MG1025G29	WILKOFAS, 789.229, DARK CHARCOAL GRAY	0.125 GA
12PA1000	PACKAGING GROUP PRINT PK1024A07	1.000 EA
HW2501H28	KEY, 1/2 SQ X 3.250	1.000 EA

**AC Induction Motor Performance Data**

Record # 67038

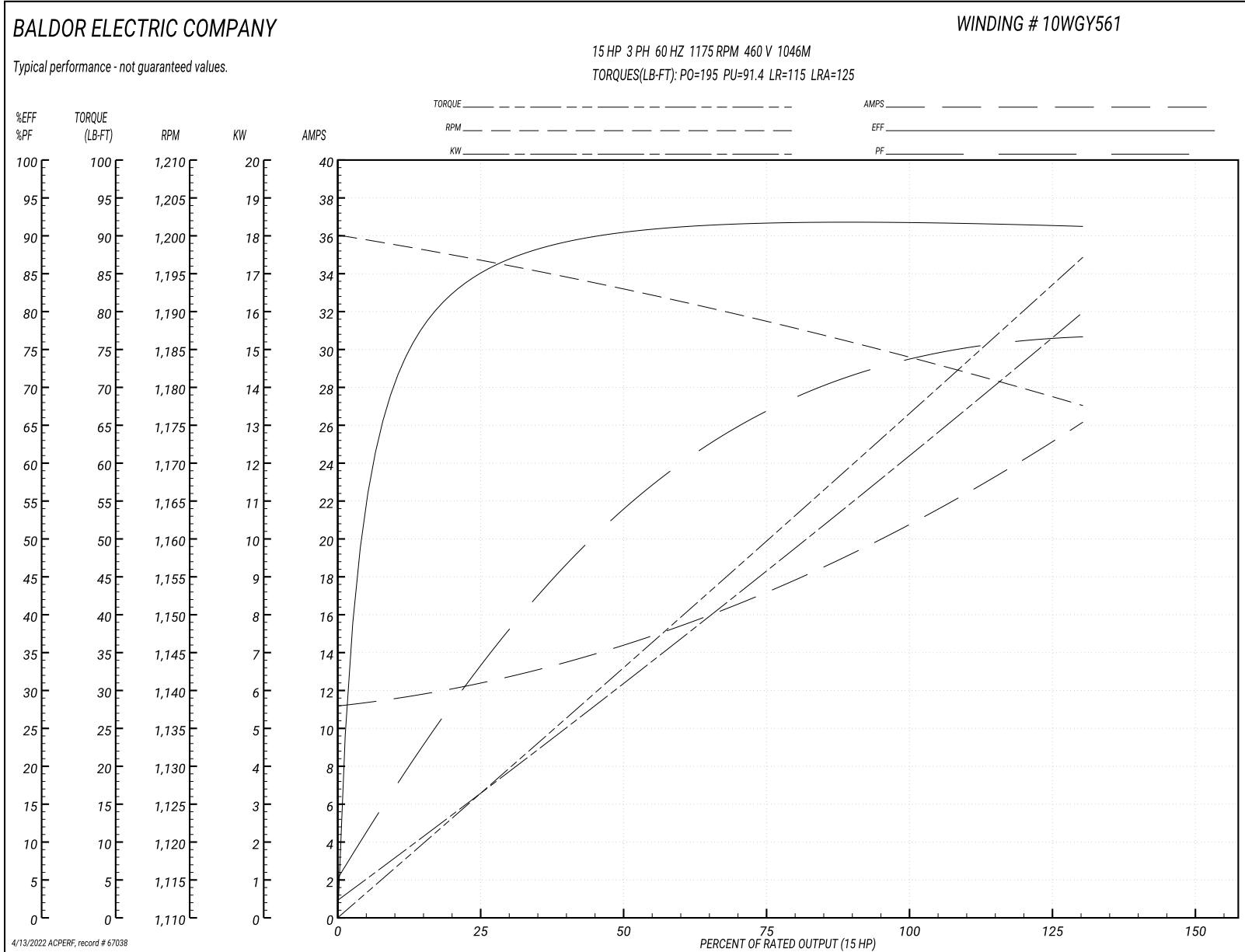
Typical performance - not guaranteed values

<b>Winding:</b> 10WGY561-R013		<b>Type:</b> 1046M		<b>Enclosure:</b> XPFC	
<b>Nameplate Data</b>			<b>460 V, 60 Hz: High Voltage Connection</b>		
<b>Rated Output (HP)</b>	15	<b>Full Load Torque</b>	66.5 LB-FT		
<b>Volts</b>	230/460	<b>Start Configuration</b>	direct on line		
<b>Full Load Amps</b>	42/21	<b>Breakdown Torque</b>	195 LB-FT		
<b>R.P.M.</b>	1175	<b>Pull-up Torque</b>	91.4 LB-FT		
<b>Hz</b>	60 <b>Phase</b>	3	<b>Locked-rotor Torque</b>	115 LB-FT	
<b>NEMA Design Code</b>	<b>A KVA Code</b>	H	<b>Starting Current</b>	125 A	
<b>Service Factor (S.F.)</b>		1	<b>No-load Current</b>	11.3 A	
<b>NEMA Nom. Eff.</b>	91.7	<b>Power Factor</b>	73	<b>Line-line Res. @ 25°C</b>	0.56099 Ω
<b>Rating - Duty</b>	40C	<b>AMB-CONT</b>		<b>Temp. Rise @ Rated Load</b>	49°C
				<b>Locked-rotor Power Factor</b>	32.9
				<b>Rotor inertia</b>	5.63 LB-FT <sup>2</sup>

**Load Characteristics 460 V, 60 Hz, 15 HP**

<b>% of Rated Load</b>	<b>25</b>	<b>50</b>	<b>75</b>	<b>100</b>	<b>125</b>	<b>150</b>
<b>Power Factor</b>	34	54	66	73	76	77
<b>Efficiency</b>	85	90.6	91.8	92	91.5	91.3
<b>Speed</b>	1197	1193	1188.7	1183.9	1179	1177.5
<b>Line amperes</b>	12.2	14.3	17.3	20.8	25.1	26.1

Performance Graph at 460V, 60Hz, 15.0HP Typical performance - Not guaranteed values





**AC Induction Motor Performance Data**

Record # 75699

Typical performance - not guaranteed values

<b>Winding:</b> 10WGY561-R010		<b>Type:</b> 1046M		<b>Enclosure:</b> XPFC	
<b>Nameplate Data</b>			<b>380 V, 50 Hz: High Voltage Connection</b>		
<b>Rated Output (HP)</b>	15//10		<b>Full Load Torque</b>	53.18 LB-FT	
<b>Volts</b>	230/460//190/380		<b>Start Configuration</b>	direct on line	
<b>Full Load Amps</b>	42/21//36/18		<b>Breakdown Torque</b>	187 LB-FT	
<b>R.P.M.</b>	1175//985		<b>Pull-up Torque</b>	94 LB-FT	
<b>Hz</b>	60//50	<b>Phase</b>	3	<b>Locked-rotor Torque</b>	118 LB-FT
<b>NEMA Design Code</b>	A	<b>KVA Code</b>	H	<b>Starting Current</b>	121 A
<b>Service Factor (S.F.)</b>	1		<b>No-load Current</b>	10.99 A	
<b>NEMA Nom. Eff.</b>	91.7	<b>Power Factor</b>	73	<b>Line-line Res. @ 25°C</b>	0.502 Ω
<b>Rating - Duty</b>	40C AMB-CONT		<b>Temp. Rise @ Rated Load</b>	39°C	
<b>S.F. Amps</b>			<b>Temp. Rise @ S.F. Load</b>	45°C	
			<b>Locked-rotor Power Factor</b>	36.5	
			<b>Rotor inertia</b>	5.63 LB-FT <sup>2</sup>	

**Load Characteristics 380 V, 50 Hz, 10 HP**

<b>% of Rated Load</b>	<b>25</b>	<b>50</b>	<b>75</b>	<b>100</b>	<b>125</b>	<b>150</b>
<b>Power Factor</b>	29	48	60	68	73	74
<b>Efficiency</b>	82.5	89	90.8	91.2	90.9	90.9
<b>Speed</b>	998	994	991	987	983	982
<b>Line amperes</b>	11.68	13.26	15.51	18.13	21.4	21.87

Performance Graph at 380V, 50Hz, 10.0HP Typical performance - Not guaranteed values

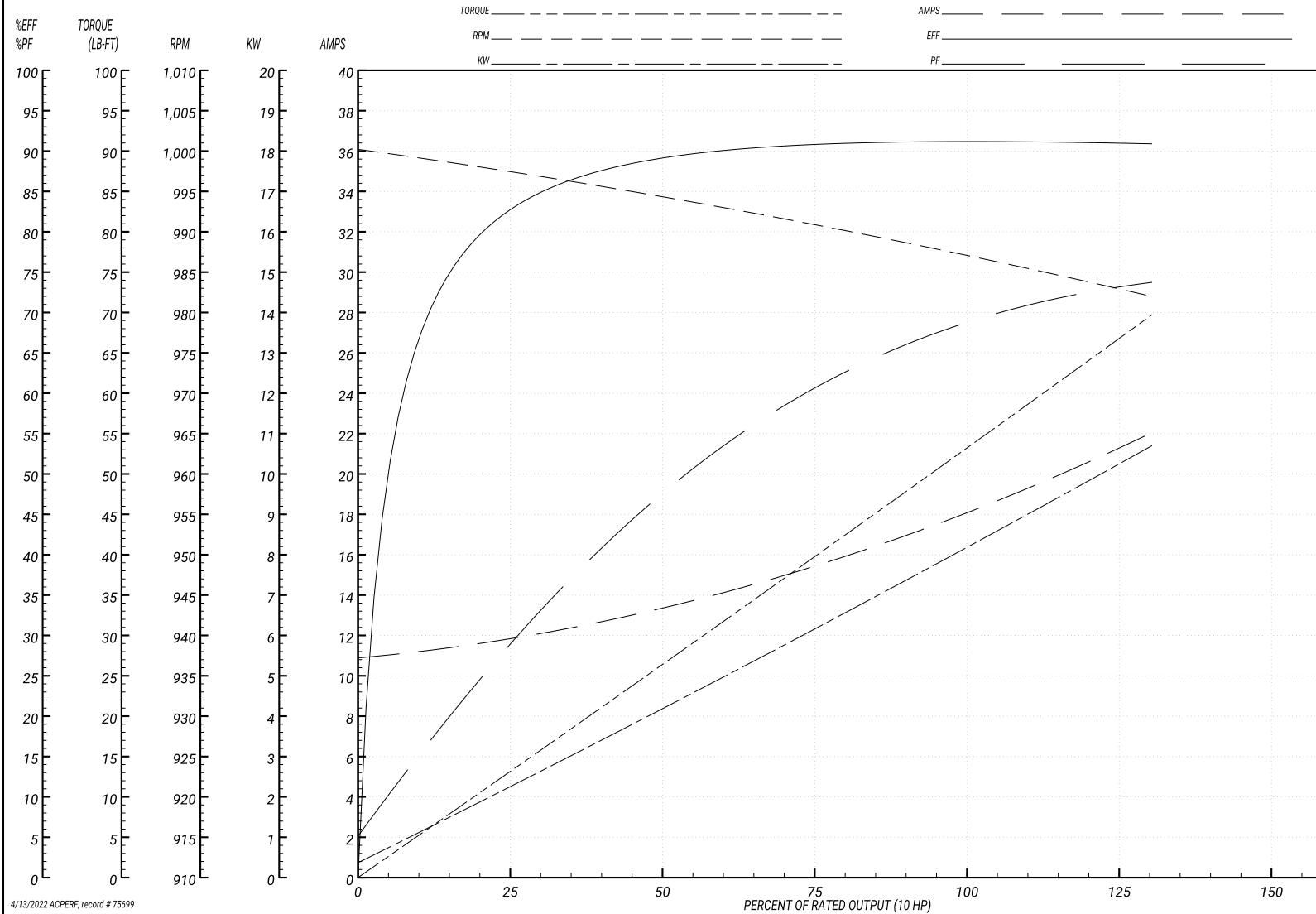
**BALDOR ELECTRIC COMPANY**

WINDING # 10WGY561

Typical performance - not guaranteed values.

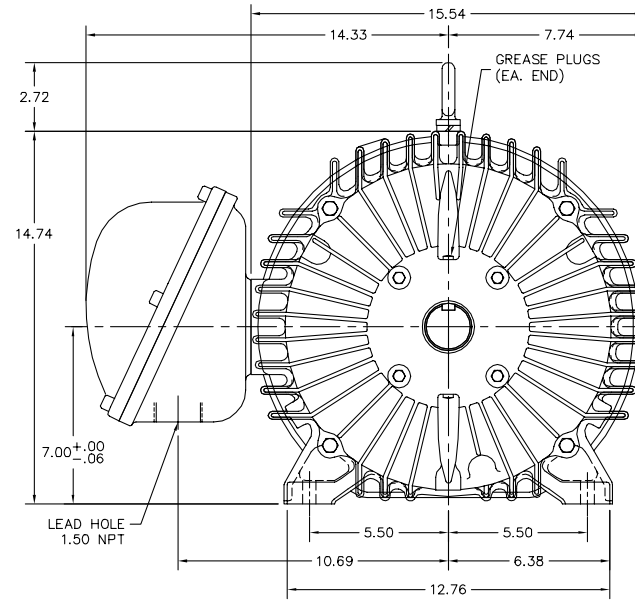
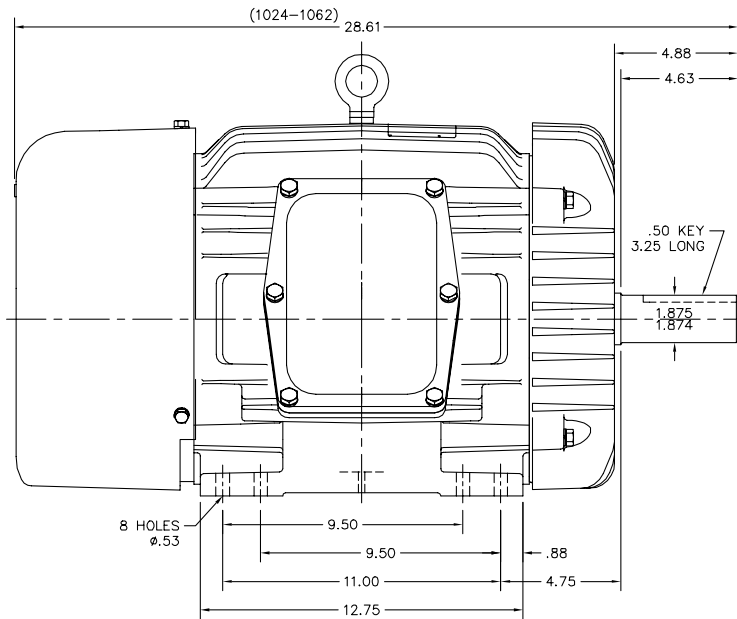
10 HP 3 PH 50 HZ 987 RPM 380 V 1046M

TORQUES(LB-FT): PO=187 PU=94 LR=118 LRA=121



4/13/2022 ACPERF, record # 75699

10LYE106



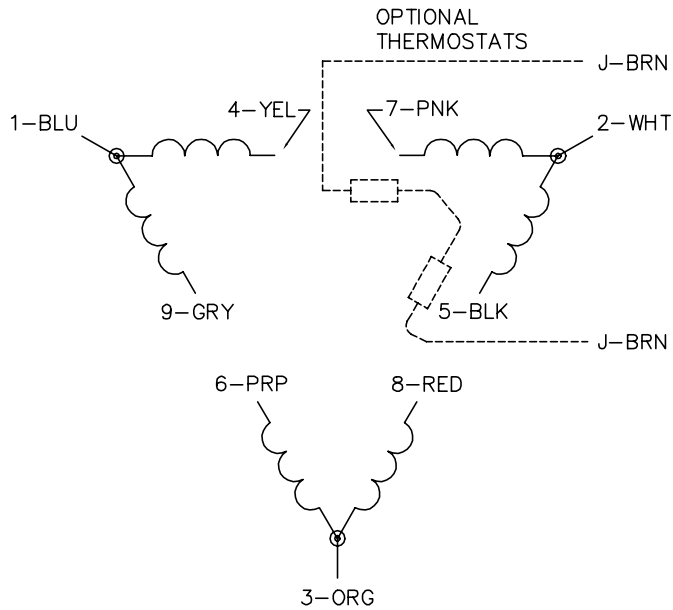
10LYE106

CUSTOMER IS RESPONSIBLE FOR DETERMINING THAT BALDOR'S PRODUCT WILL PERFORM SUITABLY IN THE INTENDED APPLICATION.

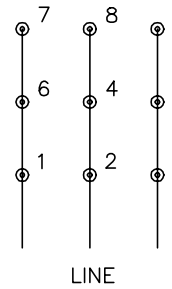
REV. DESC: ADDED 1062 STACK	VERSION: 04	TDR: 000001123693
REV. LTR: M	REVISED: 01:49:53 05/05/2021	BY: USEROLI
FILE: \AAA\00001\944		
MTL: -		

**BALDOR - RELIANCE**®  
 HORZ XPFC 284-6T CL.I GP.D,CL.II GP.F&G  
 SH 1 of 1

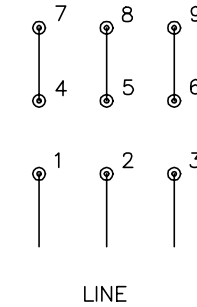
CD0180



LOW VOLTAGE  
(2D)



HIGH VOLTAGE  
(1D)



NOTES:

1. INTERCHANGE ANY TWO LINE LEADS TO REVERSE ROTATION.
2. OPTIONAL THERMOSTATS ARE PROVIDED WHEN SPECIFIED.
3. ACTUAL NUMBER OF INTERNAL PARALLEL CIRCUITS MAY BE A MULTIPLE OF THOSE SHOWN ABOVE.
4. LEAD COLORS ARE OPTIONAL. LEADS MUST ALWAYS BE NUMBERED AS SHOWN.

CD0180

REV. DESC: ADD CLASS CONN00000007		
REV. LTR: D	VERSION: 01	TDR: 000001099922
FILE: \AAA\00005\148	REVISED: 10:25:29 02/19/2019	BY: ENBRIRO
MTL: -	© □	

**BALDOR - RELIANCE®**

3PH, DV, 9 LEADS, DELTA CONNECTION

SH 1 of 1

Marketing maintained PDF of MN416:

<http://www.baldor.com/support/Literature/Load.ashx/MN416?ManNumber=MN416>