

BALDOR® • RELIANCE 

Product Information Packet

XM28322T

30//25HP,3525//2920RPM,3PH,60//50HZ,286T

| Part Detail | | | | | | | |
|-------------|----|-------------|------------|-------------|--------|---------------|------------|
| Revision: | - | Status: | PRD/A | Change #: | | Proprietary: | No |
| Type: | AC | Elec. Spec: | 10WGZ501 | CD Diagram: | CD0180 | Mfg Plant: | |
| Mech. Spec: | | Layout: | 10LYE900 | Poles: | 02 | Created Date: | 04-21-2021 |
| Base: | | Eff. Date: | 04-30-2021 | Leads: | 9#10 | | |

| Specs | | | |
|---------------------------------|-----------------------|--------------------------------|---------------------------|
| Catalog Number: | XM28322T | Duty Rating: | CONT |
| Enclosure: | XPFC | Electrically Isolated Bearing: | Not Electrically Isolated |
| Frame: | 286TS | Feedback Device: | NO FEEDBACK |
| Frame Material: | Iron | Heater Indicator: | No Heater |
| Output @ Frequency: | 30.000 HP @ 60 HZ | Insulation Class: | F |
| | 25.000 HP @ 50 HZ | Inverter Code: | Not Inverter |
| Synchronous Speed @ Frequency: | 3600 RPM @ 60 HZ | IP Rating: | NONE |
| Voltage @ Frequency: | 190.0 V @ 50 HZ | KVA Code: | G |
| | 460.0 V @ 60 HZ | Lifting Lugs: | Standard Lifting Lugs |
| | 230.0 V @ 60 HZ | Locked Bearing Indicator: | Locked Bearing |
| | 380.0 V @ 50 HZ | Motor Lead Termination: | Flying Leads |
| XP Class and Group: | CLI GP D; CLII GP F,G | Motor Type: | 1048M |
| XP Division: | Division I | Mounting Arrangement: | F1 |
| Agency Approvals: | UR | Power Factor: | 90 |
| | CSA EEV | Product Family: | Hazardous Location Motor |
| | CSA | Pulley Face Code: | Standard |
| Auxillary Box: | No Auxillary Box | Rodent Screen: | None |
| Auxillary Box Lead Termination: | None | Shaft Ground Indicator: | No Shaft Grounding |

| | | | |
|-------------------------------------|-------------------------|------------------------------------|----------------------------|
| Base Indicator: | Rigid | Shaft Rotation: | Reversible |
| Bearing Grease Type: | Polyrex EM (-20F +300F) | Speed Code: | Single Speed |
| Blower: | None | Motor Standards: | NEMA |
| Constant Torque Speed Range: | 6 | Starting Method: | Direct on line |
| Current @ Voltage: | 70.000 A @ 190.0 V | Thermal Device - Bearing: | None |
| | 68.000 A @ 230.0 V | Thermal Device - Winding: | Normally Closed Thermostat |
| | 35.000 A @ 380.0 V | Vibration Sensor Indicator: | No Vibration Sensor |
| | 34.000 A @ 460.0 V | Winding Thermal 1: | None |
| Design Code: | B | Winding Thermal 2: | None |
| Drip Cover: | No Drip Cover | XP Temp Code: | T3C |

| Nameplate NP0887XPSLEV | | | | | | | | | | |
|------------------------|------------------|----|--------|--------------|-------|------------|------|-----|----------|----|
| NO. | | | | | | CC | 010A | | | |
| S/N | | | | | | TEMP CODE | T3C | | | |
| SPEC. | 10-0000-2077 | | | | | INV.TYPE | PWM | | | |
| CAT.NO. | XM28322T | | | | | C HP FR | 60 | | C HP TO | 90 |
| HP | 30//25 | | | | | CT HZ FROM | 6 | | CT HZ TO | 60 |
| VOLTS | 230/460//190/380 | | | | | VT HZ FROM | 6 | | VT HZ TO | 60 |
| AMPS | 68/34//70/35 | | | | | MAG CUR | 8.7 | | | |
| RPM | 3525//2920 | | | | | MX RPM | 5400 | | | |
| HZ | 60//50 | PH | 3 | CL | F | NOM.EFF. | 91.7 | | | |
| SER.F. | 1.00 | | DES | B | SL HZ | 1.3 | | WK2 | 2.07 | |
| FRAME | 286TS | | RATING | 40C AMB-CONT | | | | | | |
| NEMA MG-1 PART 5, IP54 | | | | | | | | | | |
| 1.15 SF ON SINE WAVE | | | | | | | | | | |
| | | | | | | | | | | |

| Parts List | | |
|--------------|--|----------|
| Part Number | Description | Quantity |
| SA393023 | SA 10-0000-2077 | 1.000 EA |
| RA383638 | RA 10-0000-2077 | 1.000 EA |
| LB1115N | LABEL,LIFTING DEVICE (ON ROLLS) | 1.000 EA |
| LB1119N | WARNING LABEL | 1.000 EA |
| LC0181 | CONNECTION LABEL | 1.000 EA |
| NP0887XPSLEV | SS XP INV UL CSA-EEV CC CL-I GP-D | 1.000 EA |
| 85XU0407S04 | 4X1/4 U DRIVE PIN STAINLESS | 4.000 EA |
| 85XU0407S04 | 4X1/4 U DRIVE PIN STAINLESS | 2.000 EA |
| MN416A01 | TAG-INSTAL-MAINT no wire (2100/bx) 4/22 | 1.000 EA |
| LB1073 | ALUM XP CAUTION LABEL | 1.000 EA |
| 10FH1008A01 | 310 FAN HOUSING X-PROOF MACH. | 1.000 EA |
| HW1001A31 | LOCKWASHER 5/16, ZINC PLT.591 OD, .319 I | 3.000 EA |
| 10XN3118K12 | 5/16-18 X .75 GRADE 5, ZINC PLATED | 3.000 EA |
| 37FN3002C03 | EXFN, PLASTIC, 6.00 OD, 1.690 ID | 1.000 EA |
| HW2500A25 | WOODRUFF KEY USA #1008 #BLOW CARBON STEE | 1.000 EA |
| 51XB1214A20 | 12-14X1.25 HXWSSLD SERTYB | 1.000 EA |
| MJ1000A02 | GREASE, MOBIL POLYREX EM - 124047 | 0.130 LB |
| WD4100A03 | DE-750 HEYCO PLUG 62MP0750 MICRO PLASTIC | 1.000 EA |
| 10EP1701A01 | FR ENDPLATE, MACH | 1.000 EA |
| HA3050A03 | 3/8-16 X 2.25" GRADE 8 BOLT | 4.000 EA |
| HW1001A38 | LOCKWASHER 3/8, ZINC PLT .688 OD, .382 I | 4.000 EA |
| HW5100A11 | W3917-042 WVY WSHR (WB) | 1.000 EA |
| HW4500A20 | 1/8NPT SL PIPE PLUG | 1.000 EA |
| HW4500A20 | 1/8NPT SL PIPE PLUG | 1.000 EA |

| Parts List (continued) | | |
|------------------------|---|----------|
| Part Number | Description | Quantity |
| 10EP1709A08 | PU ENDPLATE, X-PROOF W/LABYRINTH SHAFT G | 1.000 EA |
| HW1001A38 | LOCKWASHER 3/8, ZINC PLT .688 OD, .382 I | 4.000 EA |
| HA3050A03 | 3/8-16 X 2.25" GRADE 8 BOLT | 4.000 EA |
| 10XN2520K40 | 1/4-20 X 2-1/2 HEX HD CAPSCREW, GRADE 5,Z | 4.000 EA |
| HW1001A25 | LOCKWASHER 1/4, ZINC PLT .493 OD, .255 I | 4.000 EA |
| HW4500A20 | 1/8NPT SL PIPE PLUG | 1.000 EA |
| HW4500A20 | 1/8NPT SL PIPE PLUG | 1.000 EA |
| 12CB1001A02 | K.O.BOX, MACH X-PROOF, 1.25 NPT HOLE | 1.000 EA |
| 10XN3118K16 | 5/16-18 X 1' GRADE #5, STL, ZINC PLATE | 4.000 EA |
| HW1001A31 | LOCKWASHER 5/16, ZINC PLT.591 OD, .319 I | 4.000 EA |
| WD1000B25 | GND LUG, BURNDY L125HP OR T&B L125HP-BB | 1.000 EA |
| 19XW3118G08 | .31-18X.50,HEX WSHR HD,TAPTITE 2,GREEN | 1.000 EA |
| 12CB1501A01 | COND.BOX LID, MACH., X-PROOF, 310,312 | 1.000 EA |
| 10XN3816K20 | 3/8-16 X 1.25 HEX HD CAP GRADE 5 | 6.000 EA |
| HW1001A38 | LOCKWASHER 3/8, ZINC PLT .688 OD, .382 I | 6.000 EA |
| MG1025G29 | WILKOFAS, 789.229, DARK CHARCOAL GRAY | 0.125 GA |
| 12PA1000 | PACKAGING GROUP PRINT PK1024A07 | 1.000 EA |
| HW2501G17 | KEY, 3/8 SQ X 1.875 | 1.000 EA |

AC Induction Motor Performance Data

Record # 70639

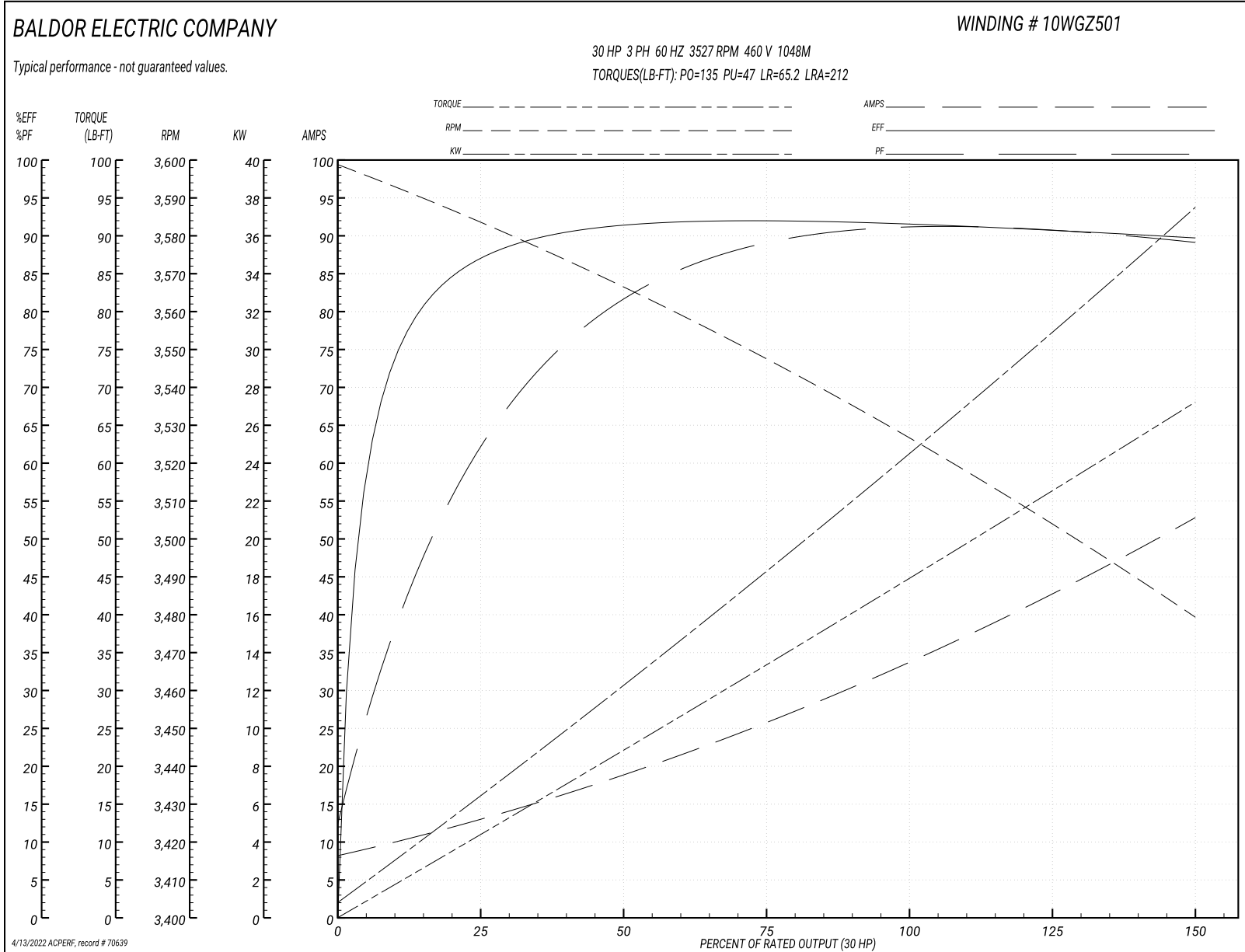
Preliminary Data Sheet

| Winding: 10WGZ501-R012 | | Type: 1048M | | Enclosure: TEFC | |
|-------------------------------|-------------------|---------------------|--|----------------------------------|-------------------------|
| Nameplate Data | | | 460 V, 60 Hz: High Voltage Connection | | |
| Rated Output (HP) | 30//25 | | Full Load Torque | 44.8 LB-FT | |
| Volts | 230/460//190/380 | | Start Configuration | direct on line | |
| Full Load Amps | 68/34//70/35 | | Breakdown Torque | 135 LB-FT | |
| R.P.M. | 3525//2920 | | Pull-up Torque | 47 LB-FT | |
| Hz | 60//50 | Phase | 3 | Locked-rotor Torque | 65.2 LB-FT |
| NEMA Design Code | B KVA Code | | G | Starting Current | 212 A |
| Service Factor (S.F.) | | | 1.15 | No-load Current | 8.74 A |
| NEMA Nom. Eff. | 91.7 | Power Factor | 90 | Line-line Res. @ 25°C | 0.237 Ω |
| Rating - Duty | 40C AMB-CONT | | | Temp. Rise @ Rated Load | 69°C |
| S.F. Amps | | | | Temp. Rise @ S.F. Load | 86°C |
| | | | | Locked-rotor Power Factor | 23.2136 |
| | | | | Rotor inertia | 2.06 lb-ft ² |

Load Characteristics 460 V, 60 Hz, 30 HP

| % of Rated Load | 25 | 50 | 75 | 100 | 125 | 150 | S.F. |
|------------------------|-----------|-----------|-----------|------------|------------|------------|-------------|
| Power Factor | 67 | 83 | 88 | 90 | 90 | 90 | 90 |
| Efficiency | 86.8 | 91.2 | 91.9 | 91.7 | 90.8 | 89.6 | 91.2 |
| Speed | 3583 | 3566 | 3547 | 3527 | 3504 | 3479 | 3513 |
| Line amperes | 12.4 | 18.7 | 26.1 | 34.1 | 43.1 | 52.5 | 39.5 |

Performance Graph at 460V, 60Hz, 30.0HP Typical performance - Not guaranteed values



AC Induction Motor Performance Data

Record # 70640

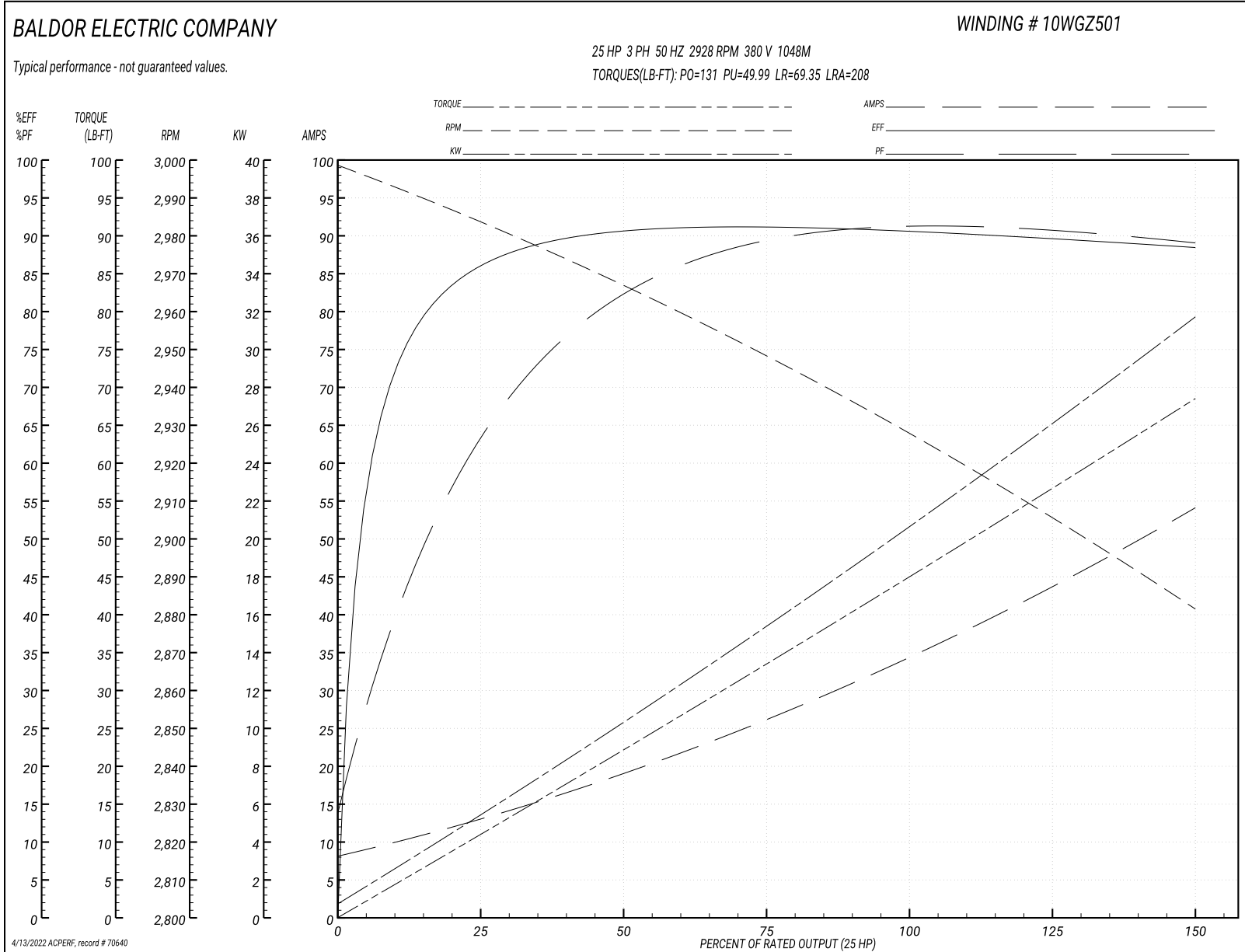
Typical performance - not guaranteed values

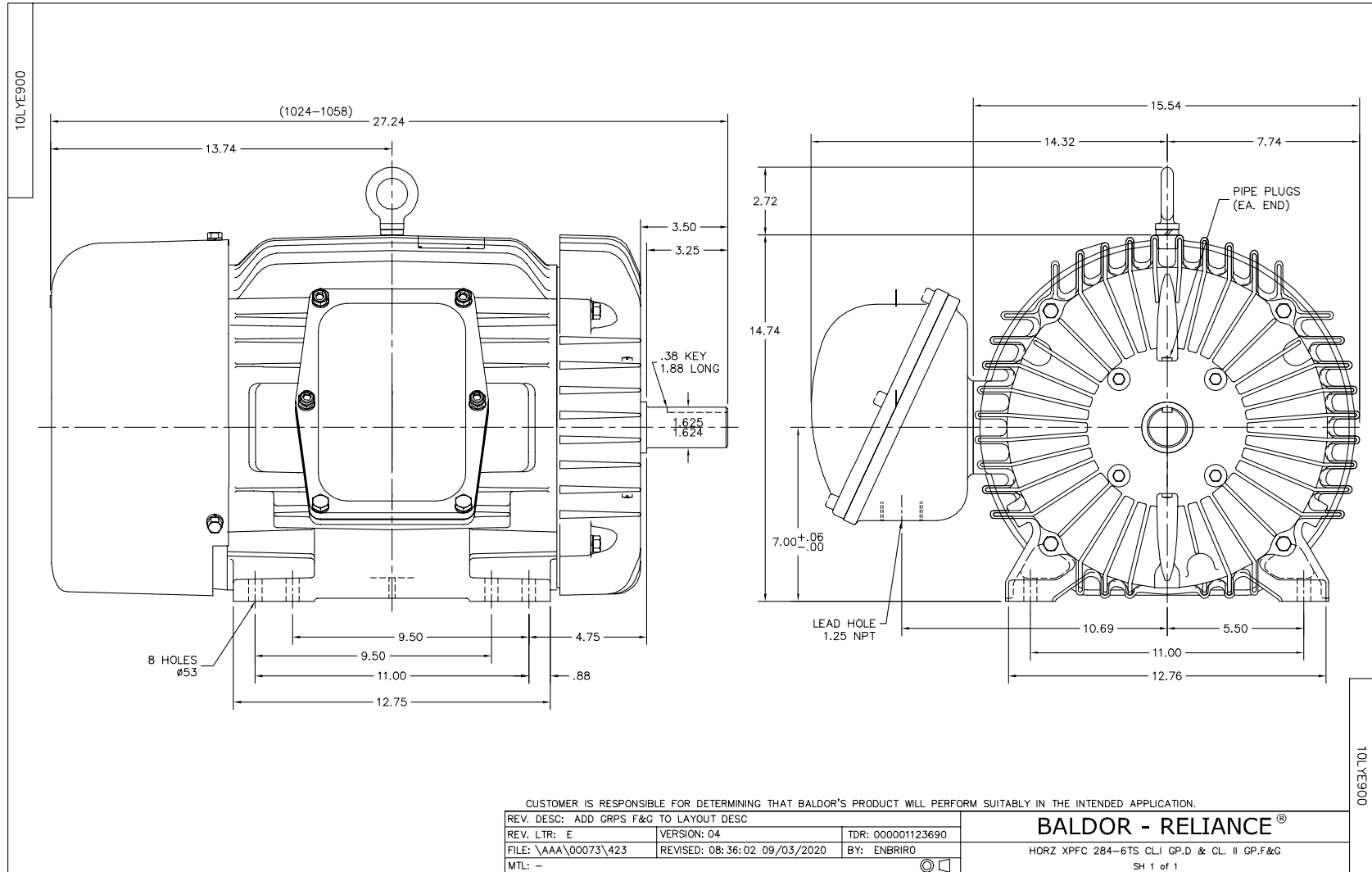
| Winding: 10WGZ501-R012 | | Type: 1048M | | Enclosure: XPFC | |
|-------------------------------|------------------|---------------------|--|------------------------------|-------------|
| Nameplate Data | | | 380 V, 50 Hz: High Voltage Connection | | |
| Rated Output (HP) | 30//25 | | Full Load Torque | 45.05 LB-FT | |
| Volts | 230/460//190/380 | | Start Configuration | direct on line | |
| Full Load Amps | 68/34//70/35 | | Breakdown Torque | 131 LB-FT | |
| R.P.M. | 3525//2920 | | Pull-up Torque | 49.99 LB-FT | |
| Hz | 60//50 | Phase | 3 | Locked-rotor Torque | 69.35 LB-FT |
| NEMA Design Code | B | KVA Code | G | Starting Current | 208 A |
| Service Factor (S.F.) | 1.15 | | No-load Current | 8.65 A | |
| NEMA Nom. Eff. | 91.7 | Power Factor | 90 | Line-line Res. @ 25°C | 0.237 Ω |
| Rating - Duty | 40C AMB-CONT | | Temp. Rise @ Rated Load | 71°C | |
| S.F. Amps | | | Temp. Rise @ S.F. Load | 90°C | |
| | | | Locked-rotor Power Factor | 26.2 | |
| | | | Rotor inertia | 2.06 LB-FT ² | |

Load Characteristics 380 V, 50 Hz, 25 HP

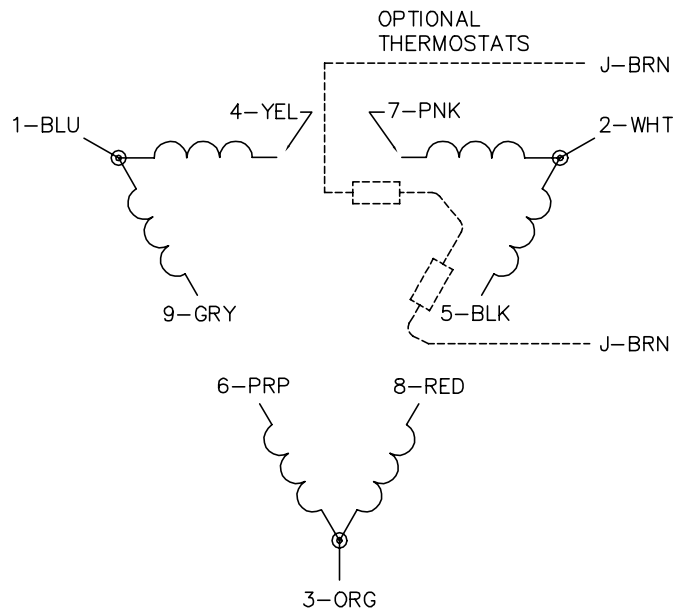
| % of Rated Load | 25 | 50 | 75 | 100 | 125 | 150 | S.F. |
|------------------------|-----------|-----------|-----------|------------|------------|------------|-------------|
| Power Factor | 68 | 84 | 89 | 90 | 90 | 90 | 90 |
| Efficiency | 85.7 | 90.4 | 91.1 | 90.7 | 89.7 | 88.3 | 90.1 |
| Speed | 2983 | 2966 | 2948 | 2928 | 2906 | 2881 | 2915 |
| Line amperes | 12.44 | 18.96 | 26.54 | 34.75 | 43.98 | 53.83 | 40.3 |

Performance Graph at 380V, 50Hz, 25.0HP Typical performance - Not guaranteed values





CD0180



LOW VOLTAGE
(2D)



HIGH VOLTAGE
(1D)



NOTES:

1. INTERCHANGE ANY TWO LINE LEADS TO REVERSE ROTATION.
2. OPTIONAL THERMOSTATS ARE PROVIDED WHEN SPECIFIED.
3. ACTUAL NUMBER OF INTERNAL PARALLEL CIRCUITS MAY BE A MULTIPLE OF THOSE SHOWN ABOVE.
4. LEAD COLORS ARE OPTIONAL. LEADS MUST ALWAYS BE NUMBERED AS SHOWN.

CD0180

| | | |
|-----------------------------------|------------------------------|-------------------|
| REV. DESC: ADD CLASS CONN00000007 | | |
| REV. LTR: D | VERSION: 01 | TDR: 000001099922 |
| FILE: \AAA\00005\148 | REVISED: 10:25:29 02/19/2019 | BY: ENBRIRO |
| MTL: - | © □ | |

BALDOR - RELIANCE®

3PH, DV, 9 LEADS, DELTA CONNECTION

SH 1 of 1

Marketing maintained PDF of MN416:

<http://www.baldor.com/support/Literature/Load.ashx/MN416?ManNumber=MN416>