

**BALDOR® • RELIANCE** 

**Product Information Packet**

**XM32522T**

**50//40HP,3540//2945RPM,3PH,60//50HZ,326T**

Part Detail							
Revision:	-	Status:	PRD/A	Change #:		Proprietary:	No
Type:	AC	Elec. Spec:	12WGA0178	CD Diagram:	CD0180	Mfg Plant:	
Mech. Spec:		Layout:	12LYG783	Poles:	02	Created Date:	04-30-2021
Base:		Eff. Date:	05-14-2021	Leads:	9#8		

Specs			
Catalog Number:	XM32522T	Duty Rating:	CONT
Enclosure:	XPFC	Electrically Isolated Bearing:	Not Electrically Isolated
Frame:	326TS	Feedback Device:	NO FEEDBACK
Frame Material:	Iron	Heater Indicator:	No Heater
Output @ Frequency:	50.000 HP @ 60 HZ	Insulation Class:	F
	40.000 HP @ 50 HZ	Inverter Code:	Inverter Duty
Synchronous Speed @ Frequency:	3600 RPM @ 60 HZ	IP Rating:	NONE
Voltage @ Frequency:	190.0 V @ 50 HZ	KVA Code:	H
	460.0 V @ 60 HZ	Lifting Lugs:	Standard Lifting Lugs
	230.0 V @ 60 HZ	Locked Bearing Indicator:	Locked Bearing
	380.0 V @ 50 HZ	Motor Lead Termination:	Flying Leads
XP Class and Group:	CLI GP D; CLII GP F,G	Motor Type:	1264M
XP Division:	Division I	Mounting Arrangement:	F1
Agency Approvals:	UR	Power Factor:	90
	CSA EEV	Product Family:	Hazardous Location Motor
	CSA	Pulley Face Code:	Standard
Auxillary Box:	No Auxillary Box	Rodent Screen:	None
Auxillary Box Lead Termination:	None	Shaft Ground Indicator:	No Shaft Grounding

<b>Base Indicator:</b>	Rigid	<b>Shaft Rotation:</b>	Reversible
<b>Bearing Grease Type:</b>	Polyrex EM (-20F +300F)	<b>Speed Code:</b>	Single Speed
<b>Blower:</b>	None	<b>Motor Standards:</b>	NEMA
<b>Constant Torque Speed Range:</b>	6	<b>Starting Method:</b>	Direct on line
<b>Current @ Voltage:</b>	56.000 A @ 460.0 V	<b>Thermal Device - Bearing:</b>	None
	55.000 A @ 380.0 V	<b>Thermal Device - Winding:</b>	Normally Closed Thermostat
	112.000 A @ 230.0 V	<b>Vibration Sensor Indicator:</b>	No Vibration Sensor
	110.000 A @ 190.0 V	<b>Winding Thermal 1:</b>	None
<b>Design Code:</b>	A	<b>Winding Thermal 2:</b>	None
<b>Drip Cover:</b>	No Drip Cover	<b>XP Temp Code:</b>	T3C

Nameplate NP0887XPSLEV										
NO.						CC	010A			
S/N						TEMP CODE	T3C			
SPEC.	12-0000-2157					INV. TYPE	PWM			
CAT.NO.	XM32522T					C HP FR	60		C HP TO	90
HP	50//40					CT HZ FROM	6		CT HZ TO	60
VOLTS	230/460//190/380					VT HZ FROM	6		VT HZ TO	60
AMPS	112/56//110/55					MAG CUR	30/15			
RPM	3540//2945					MX RPM	5400			
HZ	60//50		PH	3		CL	F		NOM.EFF.	93
SER.F.	1.00		DES	A		SL HZ	1		WK2	5.01
FRAME	326TS		RATING	40C AMB-CONT						
NEMA MG-1 PART 5, IP54										
1.15 SF ON SINE WAVE										

Parts List		
Part Number	Description	Quantity
SA393499	SA 12-0000-2157	1.000 EA
RA384149	RA 12-0000-2157	1.000 EA
LB1115N	LABEL,LIFTING DEVICE (ON ROLLS)	1.000 EA
LB1119N	WARNING LABEL	1.000 EA
LC0181	CONNECTION LABEL	1.000 EA
NP0887XPSLEV	SS XP INV UL CSA-EEV CC CL-I GP-D	1.000 EA
85XU0407S04	4X1/4 U DRIVE PIN STAINLESS	2.000 EA
85XU0407S04	4X1/4 U DRIVE PIN STAINLESS	4.000 EA
MN416A01	TAG-INSTAL-MAINT no wire (2100/bx) 4/22	1.000 EA
LB1073	ALUM XP CAUTION LABEL	1.000 EA
12FH1001A01	FAN HOUSING 312 EXPLOSION PROOF MOTORS	1.000 EA
HW1001A31	LOCKWASHER 5/16, ZINC PLT.591 OD, .319 I	3.000 EA
10XN3118K12	5/16-18 X .75 GRADE 5, ZINC PLATED	3.000 EA
10FN3001A02	310 FAN, PLASTIC 2.000 DIA. BORE	1.000 EA
HW2500A25	WOODRUFF KEY USA #1008 #BLOW CARBON STEE	1.000 EA
MJ1000A02	GREASE, MOBIL POLYREX EM - 124047	0.200 LB
12EP1705A01	ENDPLATE, MACH. 312 - EXPLOSION PROOF 31	1.000 EA
HA3051A03	1/2-13X2.75 BLT GR8 1.75 TO E NC F/S	4.000 EA
HW1001A50	LOCKWASHER 1/2, ZINC PLT.,.879 OD, .509 I	4.000 EA
HW5100A13	W4627-047 WVY WSHER	1.000 EA
HW4500A20	1/8NPT SL PIPE PLUG	1.000 EA
HW4500A20	1/8NPT SL PIPE PLUG	1.000 EA
12EP1706A01	ENDPLATE, MACH. 312 - EXPLOSION PROOF 31	1.000 EA
HW1001A50	LOCKWASHER 1/2, ZINC PLT.,.879 OD, .509 I	4.000 EA

Parts List (continued)		
Part Number	Description	Quantity
HA3051A03	1/2-13X2.75 BLT GR8 1.75 TO E NC F/S	4.000 EA
10XN3118K40	5/16-18 X 2.75" HEX HD, GRADE 5	4.000 EA
HW1001A31	LOCKWASHER 5/16, ZINC PLT.591 OD, .319 I	4.000 EA
HW4500A20	1/8NPT SL PIPE PLUG	1.000 EA
HW4500A20	1/8NPT SL PIPE PLUG	1.000 EA
12CB1001A01	K.O.BOX, MACH X-PROOF, 1.50 NPT HOLE	1.000 EA
10XN3118K16	5/16-18 X 1' GRADE #5, STL, ZINC PLATE	4.000 EA
HW1001A31	LOCKWASHER 5/16, ZINC PLT.591 OD, .319 I	4.000 EA
WD1000B25	GND LUG, BURNDY L125HP OR T&B L125HP-BB	1.000 EA
19XW3118G08	.31-18X.50,HEX WSHR HD,TAPTITE 2,GREEN	1.000 EA
12CB1501A01	COND.BOX LID, MACH., X-PROOF, 310,312	1.000 EA
10XN3816K20	3/8-16 X 1.25 HEX HD CAP GRADE 5	6.000 EA
HW1001A38	LOCKWASHER 3/8, ZINC PLT .688 OD, .382 I	6.000 EA
MG1025G29	WILKOFAS, 789.229, DARK CHARCOAL GRAY	0.125 GA
14PA1000	PACKAGING 314 GROUP COMBINED PRINT	1.000 EA
HW2501H18	KEY, 1/2 SQ X 2.000	1.000 EA

**AC Induction Motor Performance Data**

Record # 88101

Typical performance - not guaranteed values

<b>Winding:</b> 12WGA0178-R001		<b>Type:</b> 1264M		<b>Enclosure:</b> XPFC	
<b>Nameplate Data</b>			<b>460 V, 60 Hz: High Voltage Connection</b>		
<b>Rated Output (HP)</b>	50	<b>Full Load Torque</b>	75.06 LB-FT		
<b>Volts</b>	230/460//190/380	<b>Start Configuration</b>	direct on line		
<b>Full Load Amps</b>	112/56//110/55	<b>Breakdown Torque</b>	272 LB-FT		
<b>R.P.M.</b>	3540//2945	<b>Pull-up Torque</b>	80.31 LB-FT		
<b>Hz</b>	60//50 <b>Phase</b>	3	<b>Locked-rotor Torque</b>	108 LB-FT	
<b>NEMA Design Code</b>	A	<b>KVA Code</b>	H	<b>Starting Current</b>	367 A
<b>Service Factor (S.F.)</b>	1	<b>No-load Current</b>	11.91 A		
<b>NEMA Nom. Eff.</b>	93	<b>Power Factor</b>	90	<b>Line-line Res. @ 25°C</b>	0.106 Ω
<b>Rating - Duty</b>	40C AMB-CONT		<b>Temp. Rise @ Rated Load</b>	59°C	
			<b>Locked-rotor Power Factor</b>	21	
			<b>Rotor inertia</b>	5.01 lb-ft <sup>2</sup>	

**Load Characteristics 460 V, 60 Hz, 50 HP**

<b>% of Rated Load</b>	<b>25</b>	<b>50</b>	<b>75</b>	<b>100</b>	<b>125</b>	<b>150</b>
<b>Power Factor</b>	75	89	92	93	93	93
<b>Efficiency</b>	87.6	92.2	93.3	93.5	93.3	93.1
<b>Speed</b>	3582	3570	3557	3544	3531	3515
<b>Line amperes</b>	18.73	29.41	41.54	54.31	67.65	82.14

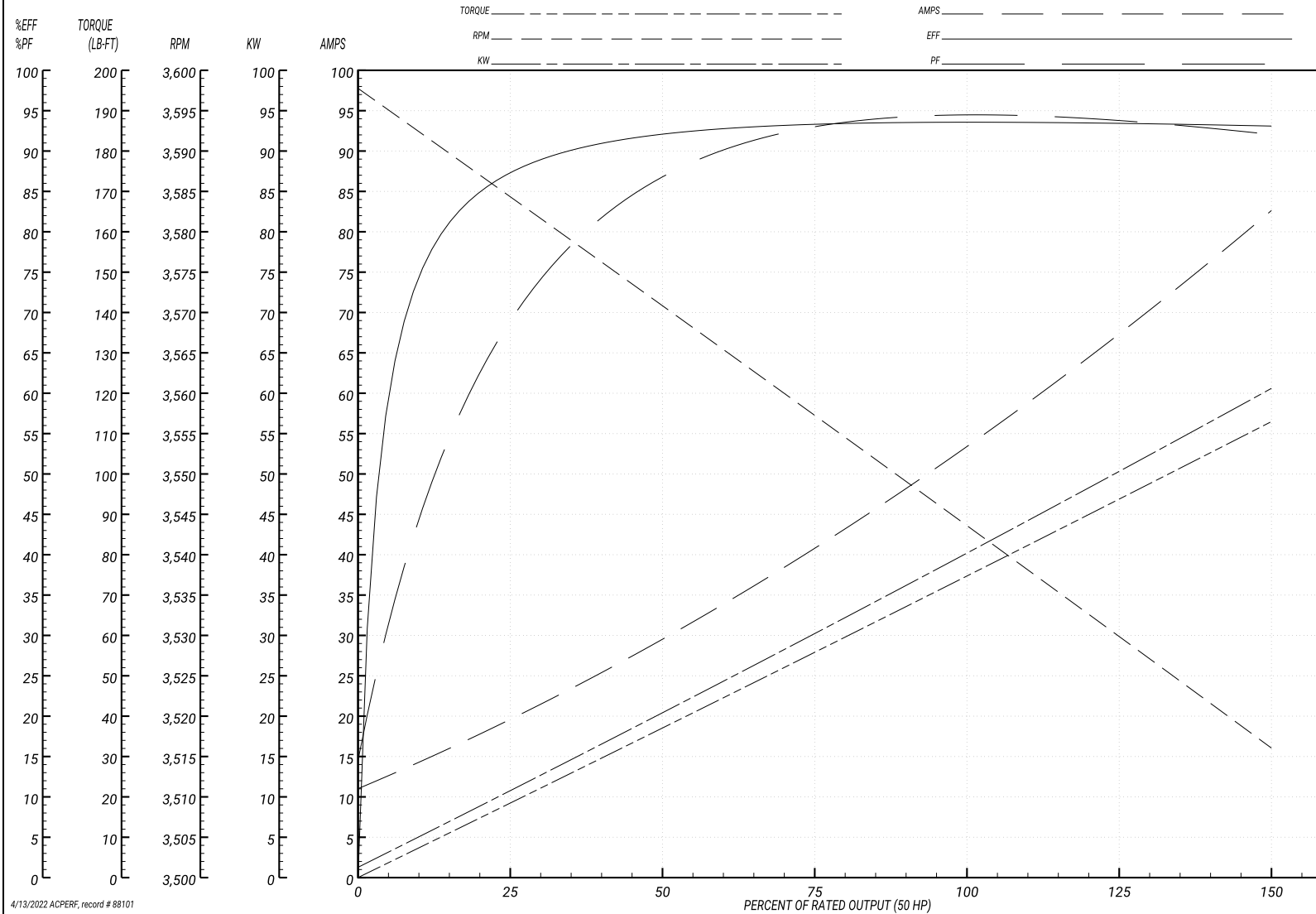
Performance Graph at 460V, 60Hz, 50.0HP Typical performance - Not guaranteed values

**BALDOR ELECTRIC COMPANY**

WINDING # 12WGA0178

Typical performance - not guaranteed values.

50 HP 3 PH 60 HZ 3544 RPM 460 V 1264M  
 TORQUES(LB-FT): PO=272 PU=80.31 LR=108 LRA=367



4/13/2022 ACPERF, record # 88101



**AC Induction Motor Performance Data**

Record # 88103

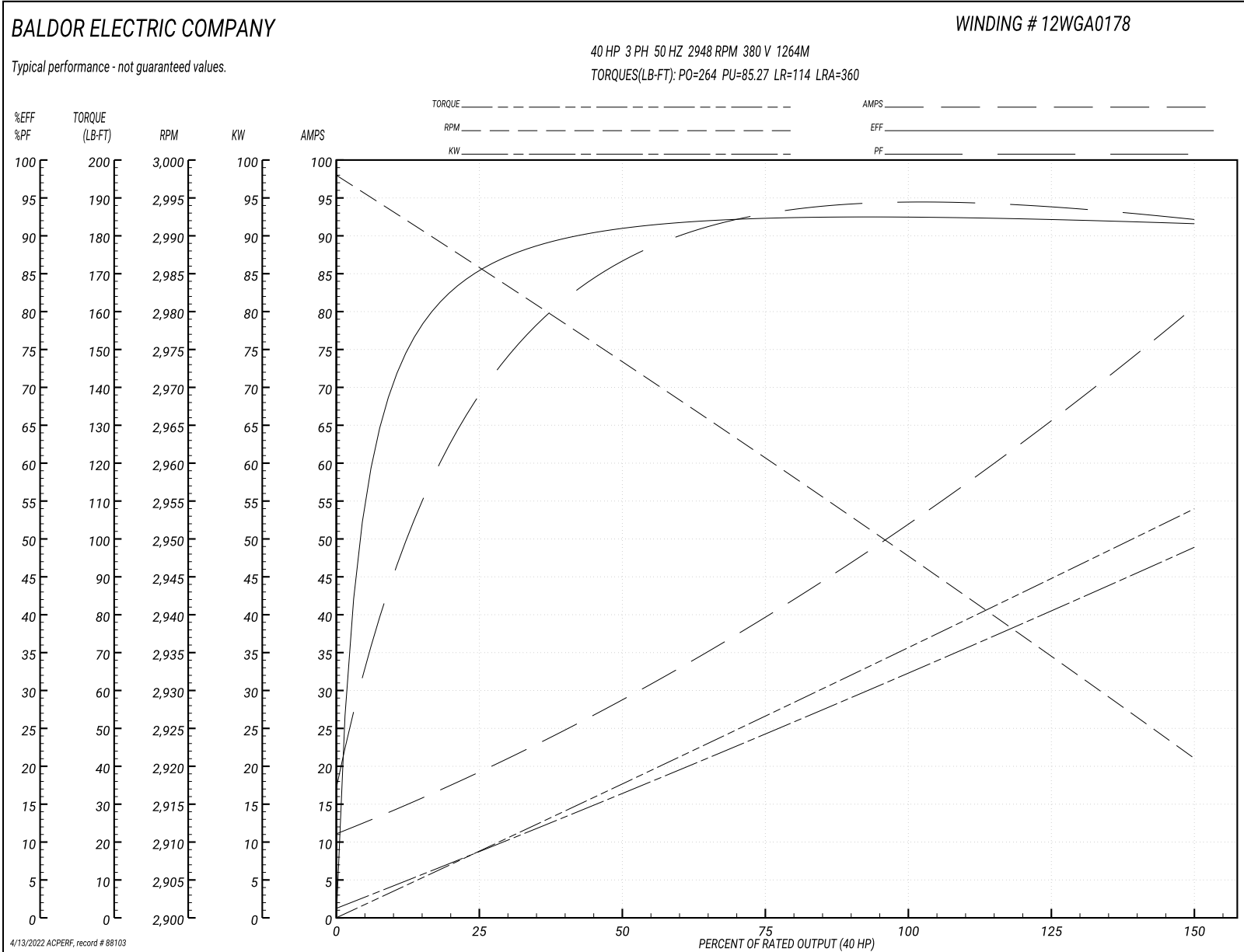
Typical performance - not guaranteed values

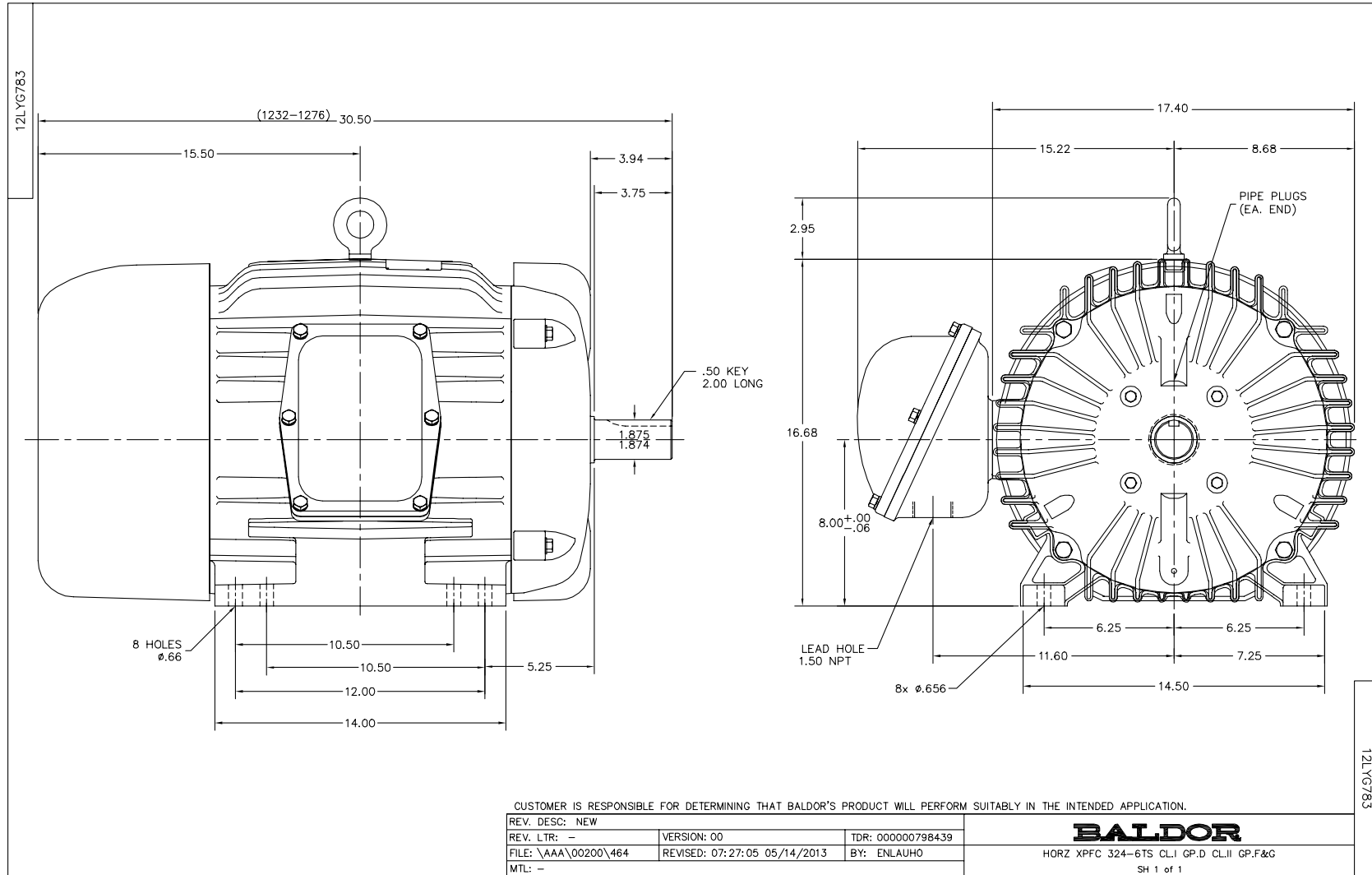
<b>Winding:</b> 12WGA0178-R001		<b>Type:</b> 1264M		<b>Enclosure:</b> XPFC	
<b>Nameplate Data</b>			<b>380 V, 50 Hz: High Voltage Connection</b>		
<b>Rated Output (HP)</b>	50	<b>Full Load Torque</b>	72.25 LB-FT		
<b>Volts</b>	230/460//190/380	<b>Start Configuration</b>	direct on line		
<b>Full Load Amps</b>	112/56//110/55	<b>Breakdown Torque</b>	264 LB-FT		
<b>R.P.M.</b>	3540//2945	<b>Pull-up Torque</b>	85.27 LB-FT		
<b>Hz</b>	60//50 <b>Phase</b>	3	<b>Locked-rotor Torque</b>	114 LB-FT	
<b>NEMA Design Code</b>	A	<b>KVA Code</b>	H	<b>Starting Current</b>	360 A
<b>Service Factor (S.F.)</b>	1	<b>No-load Current</b>	11.83 A		
<b>NEMA Nom. Eff.</b>	93	<b>Power Factor</b>	90	<b>Line-line Res. @ 25°C</b>	0.106 Ω
<b>Rating - Duty</b>	40C AMB-CONT		<b>Temp. Rise @ Rated Load</b>	56°C	
			<b>Locked-rotor Power Factor</b>	21	
			<b>Rotor inertia</b>	5.01 lb-ft <sup>2</sup>	

**Load Characteristics 380 V, 50 Hz, 40 HP**

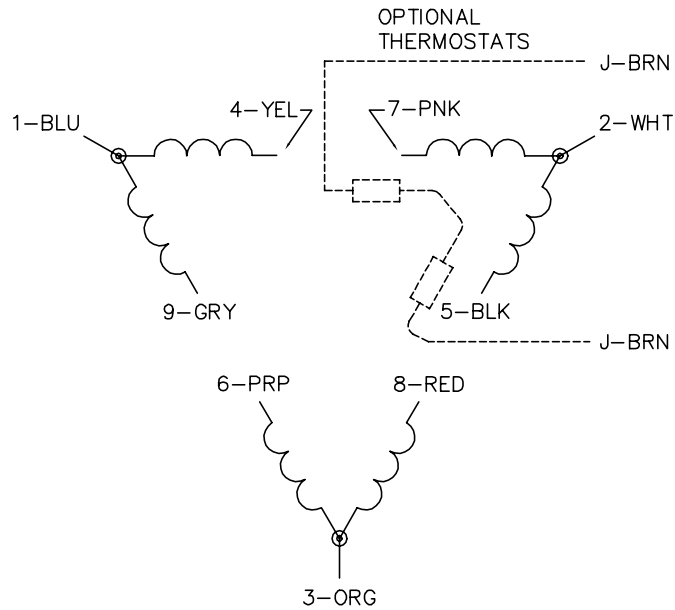
<b>% of Rated Load</b>	<b>25</b>	<b>50</b>	<b>75</b>	<b>100</b>	<b>125</b>	<b>150</b>
<b>Power Factor</b>	75	89	92	93	94	93
<b>Efficiency</b>	85.5	90.8	92.2	92.6	92.4	91.4
<b>Speed</b>	2984	2972	2960	2948	2935	2920
<b>Line amperes</b>	18.58	28.92	40.76	53.19	66.19	80.33

Performance Graph at 380V, 50Hz, 40.0HP Typical performance - Not guaranteed values

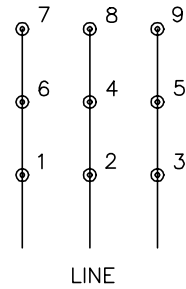




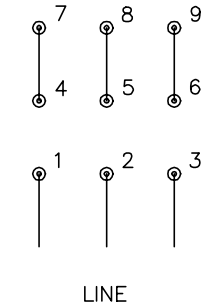
CD0180



LOW VOLTAGE  
(2D)



HIGH VOLTAGE  
(1D)



NOTES:

1. INTERCHANGE ANY TWO LINE LEADS TO REVERSE ROTATION.
2. OPTIONAL THERMOSTATS ARE PROVIDED WHEN SPECIFIED.
3. ACTUAL NUMBER OF INTERNAL PARALLEL CIRCUITS MAY BE A MULTIPLE OF THOSE SHOWN ABOVE.
4. LEAD COLORS ARE OPTIONAL. LEADS MUST ALWAYS BE NUMBERED AS SHOWN.

CD0180

REV. DESC: ADD CLASS CONN00000007		
REV. LTR: D	VERSION: 01	TDR: 000001099922
FILE: \AAA\00005\148	REVISED: 10:25:29 02/19/2019	BY: ENBRIRO
MTL: -	© □	

**BALDOR - RELIANCE®**

3PH, DV, 9 LEADS, DELTA CONNECTION

SH 1 of 1

Marketing maintained PDF of MN416:

<http://www.baldor.com/support/Literature/Load.ashx/MN416?ManNumber=MN416>