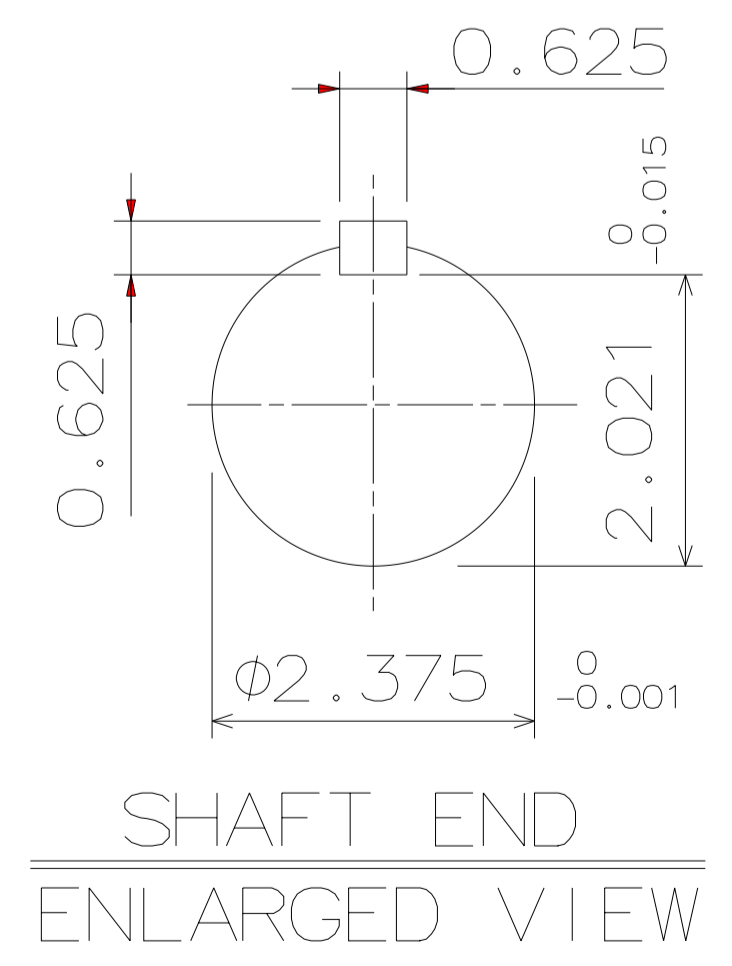
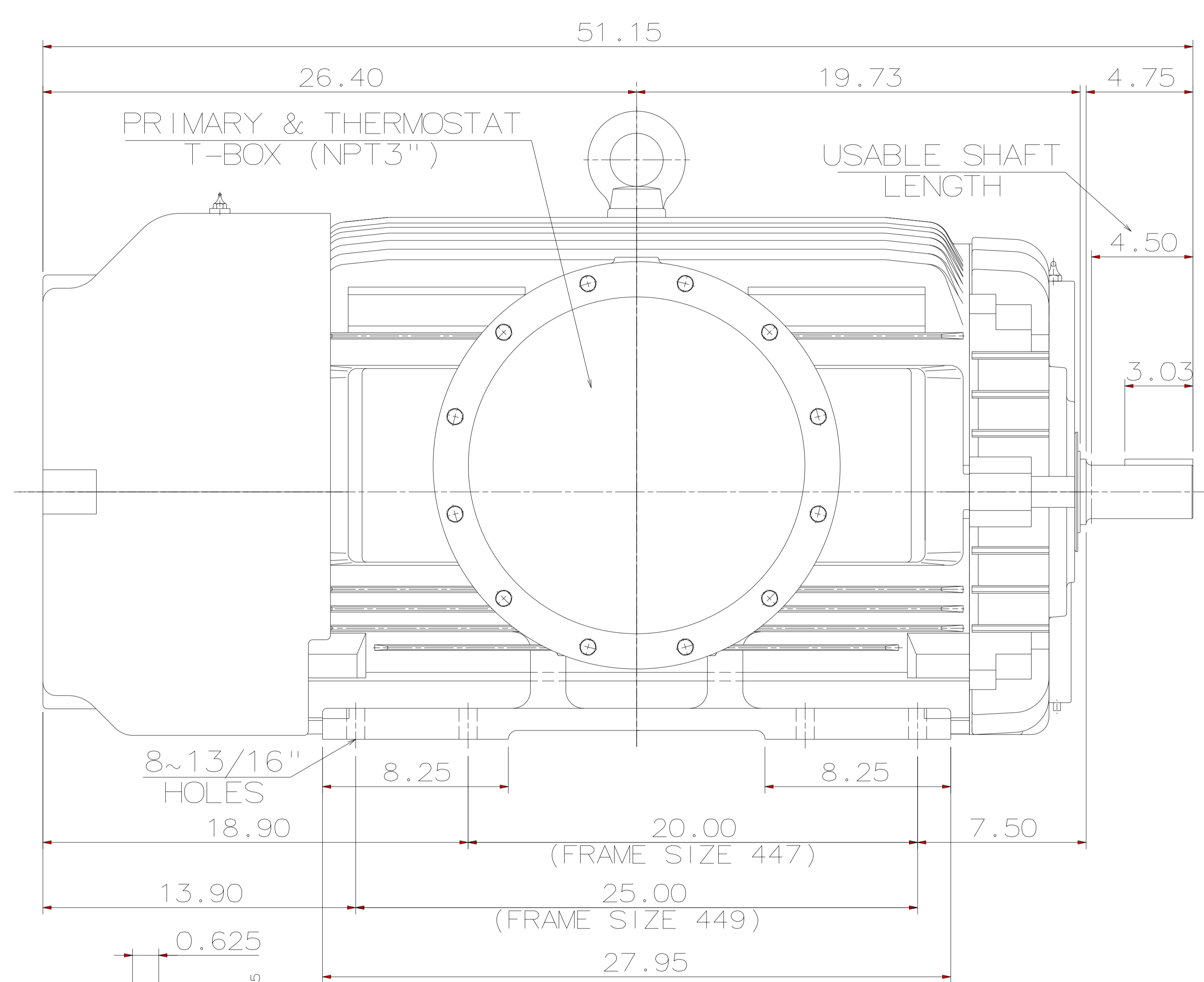
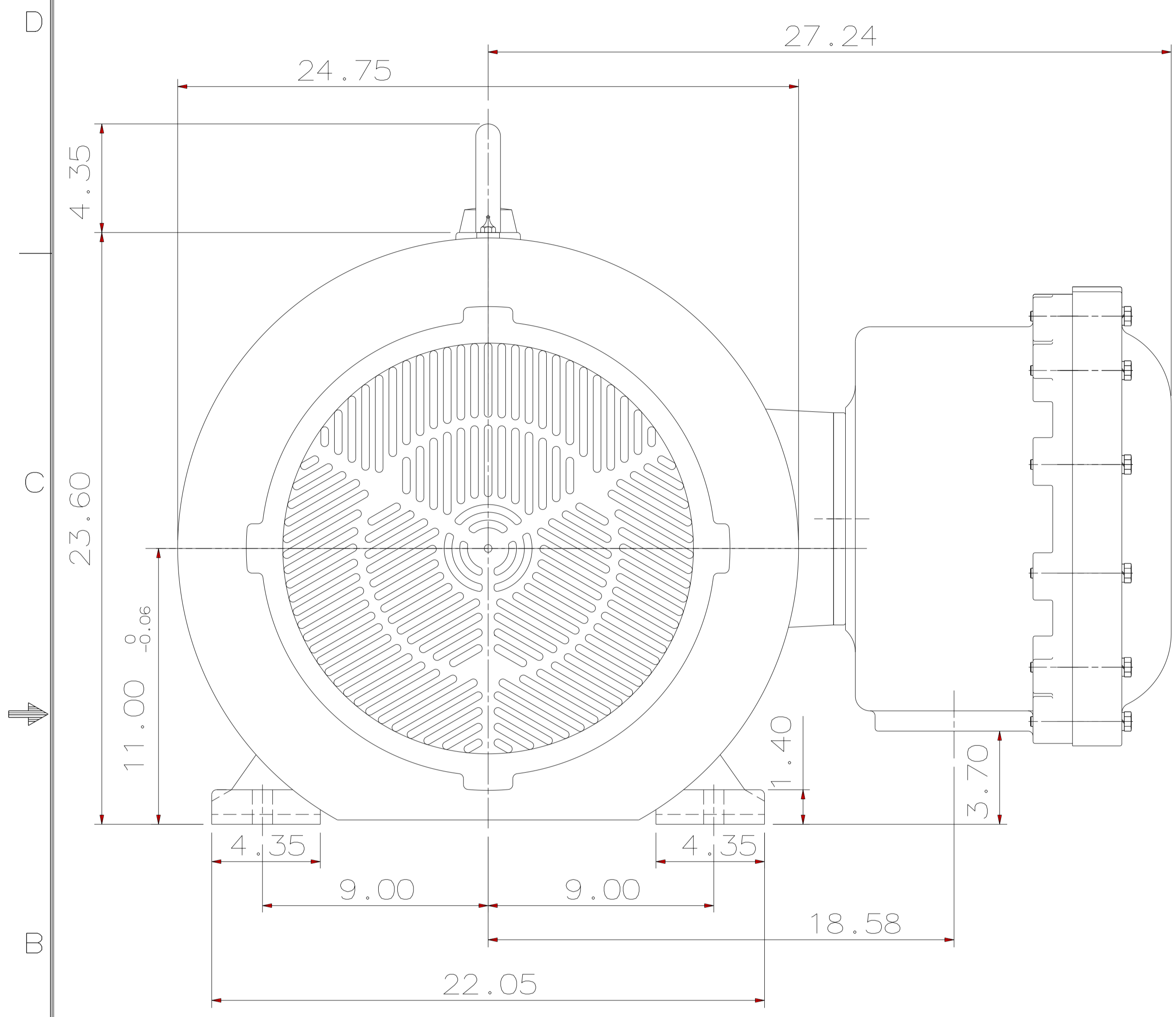


TYPE	OUTPUT		POLE	TIME RATING	VOLTAGE V	Hz	SYN. SPEED R.P.M
	HP.	kW.					
AEHH-XU	300	224	2	CONT.	460	60	3600

TOTALLY ENCLOSED FAN-COOLED TYPE. SUIRREL-CAGE ROTOR



- NOTE:
1. DIMENSIONS IN inch
 2. FRAME NO. 449TS
 3. F CLASS INSULATION, S.F.1.15
 4. FOR DIRECT FLEXIBLE COUPLING
 5. ENCLOSURE: IP55
 6. BEARING SIZE: DRIVE-END 6316C3
OPP. DRIVE-END 6316C3
 7. UL EXPLOSION PROOF
 8. WITH THERMOSTAT: N.C. 145°C 3PCS
 9. NON-SPARKING FAN
 10. APPROX. WEIGHT: 2890 lb

DATE	January 4, 2020	OUTLINE DIMENSIONS
Catalog No.:	XP3002	

DWN.	J. WANG	DEC.20.2019
CHKD.	W. CHENG	DEC.20.2019
APPD.	B. LEE	DEC.20.2019

TEC Westinghouse

DWG NO. REV: 00
4B040X553

TECO Westinghouse

ISSUED	PERFORMANCE DATA 3-PHASE INDUCTION MOTOR	ENCLOSURE
TYPE AEHHXU		CATALOG# FC203401T1

NAMEPLATE INFORMATION

OUTPUT		POLE	FRAME SIZE	VOLTAGE	HZ	RATED AMBIENT	INS. CLASS	NEMA DESIGN	TIME RATING	SERVICE FACTOR
HP	KW									
300	--	2	449	460	60	40°C	F	B	CONT.	1.15

TYPICAL PERFORMANCE

FULL LOAD RPM	EFFICIENCY				POWER FACTOR			MAXIMUM POWER FACTOR CORRECTION	
	FULL LOAD		3/4 LOAD %	1/2 LOAD %	F. L. %	3/4 LOAD %	1/2 LOAD %		
	MIN. %	NOM. %							
3580	95	95.8	95.2	93.5	87.0	84.0	75.0	54	KVAR

CURRENTS

NO LOAD	FULL LOAD	LOCKED ROTOR	NEMA KVA CODE LETTER
118.9	337.0	2200	

TORQUE

INERTIA

ACCEL TIME

FULL LOAD Lb-Ft	LOCKED ROTOR %FLT	PULL UP %FLT	BREAK DOWN %FLT	ROTOR WK ² Lb-Ft ²	NEMA LOAD WK ² Lb-Ft ²	MAX ALLOWABLE WK ² lb-ft ²	NEMA LOAD WK ² Sec	MAX ALLOWABLE WK ² Sec
440	102	97	210	52.5	246.8	246.8	36.91	36.91

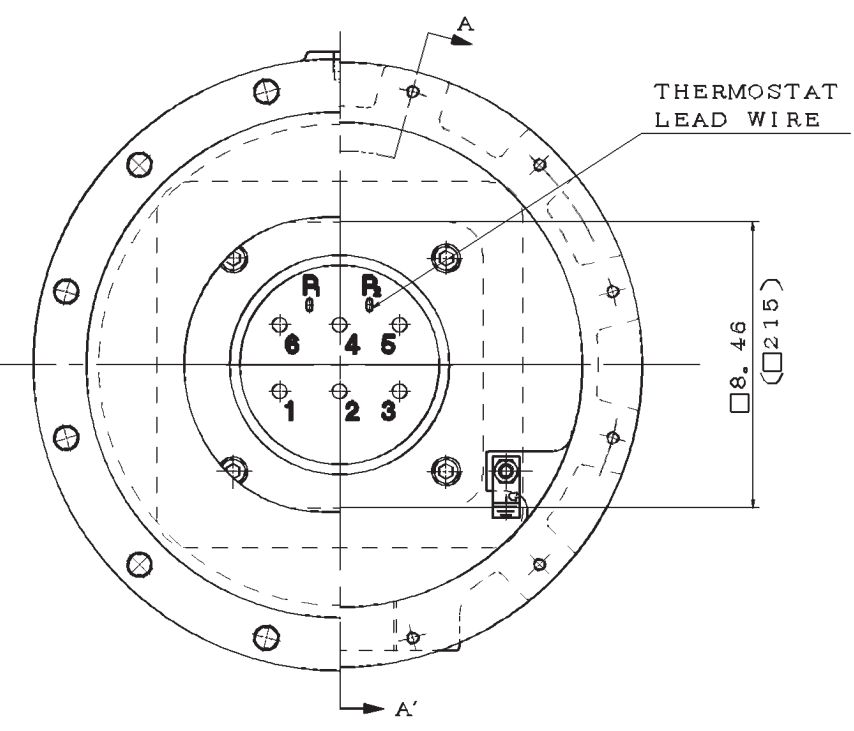
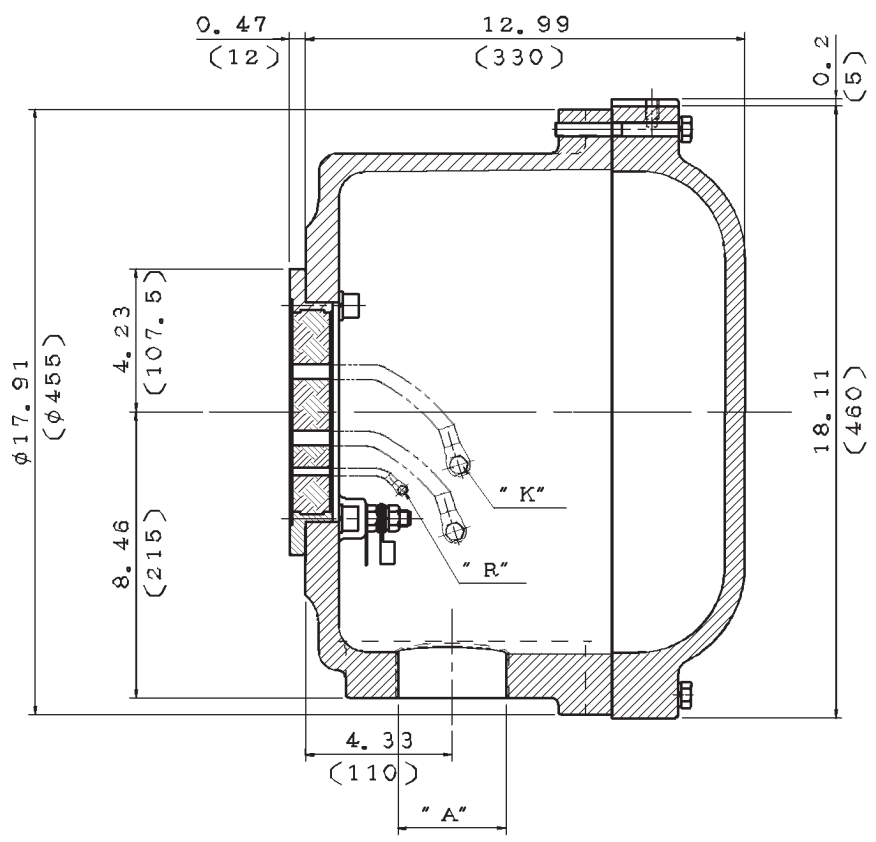
SAFE STALL TIME IN SECONDS

ALLOWABLE STARTS PER HOUR

SOUND PRESSURE LEVEL @ 3 FT dB(A)

SAFE STALL TIME IN SECONDS		ALLOWABLE STARTS PER HOUR		SOUND PRESSURE LEVEL @ 3 FT dB(A)
COLD	HOT	COLD	HOT	
25	17	2	1	90

APPROVED:		DRAWING NO.	FC203401T1-DS	REV. 00
-----------	--	-------------	----------------------	----------------

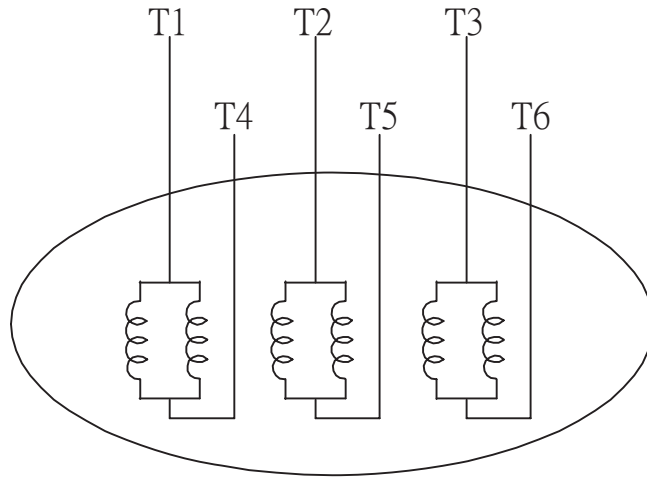


ITEM	A	K	R
01	M75×1.5	M10	M3.5
02	M75×1.5	M16	M3.5
03	NPT4"	M10	M3.5
04	NPT4"	M16	M3.5
05	PT4"	M10	M3.5
06	PT4"	M16	M3.5
07	PF4"	M10	M3.5
08	PF4"	M16	M3.5
09	NPT3"	M10	M3.5
10	NPT3"	M16	M3.5

NOTE: 1. DIMENSIONS IN inch (mm).
2. PRIMARY T-BOX

DATE		SCHEMATIC DRAWING	
		TERMINAL BOX	
DWN.	R. SHEN	MAR.22.2016	TECO Westinghouse DWG NO. 4B040R416 REV:03
CHKD.	Y. LEE	MAR.29.2016	
APPD.	C. LIU	MAR.29.2016	

DATE	SCHEMATIC 6 LEADS	MODEL



SCHEMATIC DIAGRAM - 6 LEADS

VOLTAGE	CONNECTION	ROTATION (VIEWED FROM NON-DRIVE END)
LOW (RUN. Δ)	<p>Diagram showing a delta connection for low voltage. Three horizontal lines represent power lines L1, L2, and L3. The motor windings are connected in a triangle. The top vertex is connected to L1 and labeled T6 and T1. The bottom-left vertex is connected to L2 and labeled T3 and T5. The bottom-right vertex is connected to L3 and labeled T4 and T2.</p>	<p>A curved arrow indicating clockwise rotation when viewed from the non-drive end.</p>
HIGH (START. Δ)	<p>Diagram showing a star connection for high voltage. Three horizontal lines represent power lines L1, L2, and L3. The motor windings are connected in a star configuration. The top lead is connected to L1 and labeled T1. The bottom-left lead is connected to L2 and labeled T3. The bottom-right lead is connected to L3 and labeled T2. The central point of the star is labeled T4, T5, and T6.</p>	<p>A curved arrow indicating clockwise rotation when viewed from the non-drive end.</p>

DWN.	S.HUANG	MAR • 03 • 2003
CHKD.	T.HSIAO	MAR • 03 • 2003
APPD.	T.HSIAO	MAR • 03 • 2003

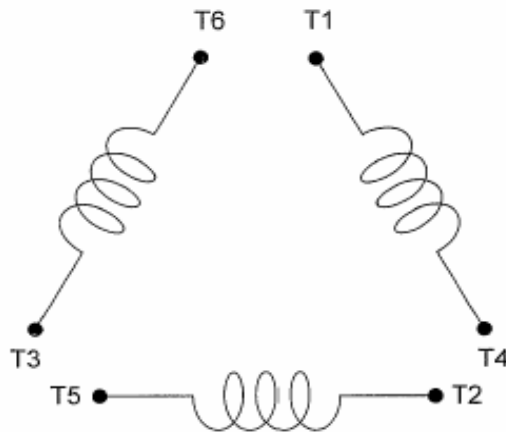


DWG NO.	REV: 00
3A061H634W	

DATE:
May 14, 2011

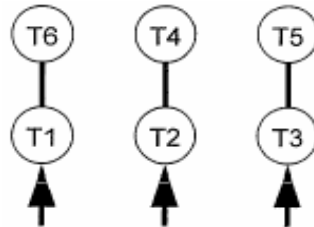
CONNECTION DIAGRAM

CATALOG NO.:
XP3002



SCHEMATIC - Δ / Y CONNECTION

ACROSS THE LINE CONNECTION



460 VOLT CONNECTION

***CONTACT TWMC IF YOU HAVE ANY QUESTIONS
REGARDING THE MOTOR CONNECTION.**

PH: 1-800-873-8326