

**BALDOR • RELIANCE**

---

# Customer information packet

## XT3604T-5

60HP, 1780RPM, 3PH, 60HZ, 364T, A3658M, TEFC, F

Class - None

Division - Division II

## Specifications

|                               |   |
|-------------------------------|---|
| Enclosure                     | TEFC  |
| Frame                         | 364T  |
| Frame Material                | Iron  |
| Frequency                     | 60.00 Hz  |
| Motor Letter Type             | Three Phase                                     |
| Output @ Frequency            | 60.000 HP @ 60 HZ                               |
| Phase                         | 3   |
| Synchronous Speed @ Frequency | 1800 RPM @ 60 HZ                                |
| Voltage @ Frequency           | 575.0 V @ 60 HZ                                 |
| XP Class and Group            | None  |
| XP Division                   | Division II                                     |
| Agency Approvals              | UR<br>NEMA_PREMIUM<br>NEMA PREMIUM<br>CCSAUSEEV |
| Ambient Temperature           | 40 °C   |
| Auxillary Box                 | No Auxillary Box                                |
| Base Indicator                | Rigid   |
| Bearing Grease Type           | Polyrex EM (-20F +300F)                         |
| Current @ Voltage             | 55.000 A @ 575.0 V                              |
| Design Code                   | B   |
| Drip Cover                    | No Drip Cover                                   |
| Duty Rating                   | CONT  |
| Efficiency @ 100% Load        | 95.0 %  |
| Feedback Device               | NO FEEDBACK                                     |
| Heater Indicator              | No Heater                                       |
| High Voltage Full Load Amps   | 55.0 a  |
| Insulation Class              | F   |
| Inverter Code                 | Inverter Ready                                  |
| IP Rating                     | NONE  |
| KVA Code                      | G   |
| Lifting Lugs                  | Standard Lifting Lugs                           |

## Part detail

|              |            |
|--------------|------------|
| Revision     | B          |
| Type         | AC         |
| Mech. spec.  |            |
| Base         |            |
| Status       | PRD/A      |
| Elec. spec.  | A36WG4086  |
| Layout       | 617431-412 |
| Eff. date    | 02-18-2022 |
| CD Diagram   | 416820-036 |
| Poles        | 04         |
| Leads        | 3#4        |
| Proprietary  | False      |
| Created date | 09-15-2021 |

|                                      |                    |
|--------------------------------------|--------------------|
| <b>Max Speed</b>                     | 3600 rpm           |
| <b>Motor Lead Quantity/Wire Size</b> | 3 @ 4 AWG          |
| <b>Motor Standards</b>               | NEMA               |
| <b>Motor Type</b>                    | A3658M             |
| <b>Mounting Arrangement</b>          | F1                 |
| <b>Number of Poles</b>               | 4                  |
| <b>Overall Length</b>                | 33.48 IN           |
| <b>Power Factor</b>                  | 84                 |
| <b>Product Family</b>                | General Industrial |
| <b>Pulley End Bearing Type</b>       | Ball               |
| <b>Pulley Face Code</b>              | Standard           |
| <b>Service Factor</b>                | 1.15               |
| <b>Shaft Diameter</b>                | 2.375 IN           |
| <b>Shaft Ground Indicator</b>        | No Shaft Grounding |
| <b>Shaft Rotation</b>                | Reversible         |
| <b>Shaft Slinger Indicator</b>       | Shaft Slinger      |
| <b>Speed</b>                         | 1780 rpm           |
| <b>Speed Code</b>                    | Single Speed       |
| <b>Starting Method</b>               | Direct on line     |
| <b>Thermal Device - Bearing</b>      | None               |
| <b>Thermal Device - Winding</b>      | None               |

**Nameplate**

**NP4152LUA**

|                                |               |           |                         |                |               |                      |            |                       |            |                      |           |       |
|--------------------------------|---------------|-----------|-------------------------|----------------|---------------|----------------------|------------|-----------------------|------------|----------------------|-----------|-------|
| <b>CAT #</b>                   | XT3604T-5     |           | <b>SER</b>              |                |               | <b>CC</b>            | 010A       |                       |            |                      |           |       |
| <b>SPEC</b>                    | A36-0013-4086 |           | <b>RATING</b>           | 40C AMB-CONT   |               |                      |            |                       |            |                      |           |       |
| <b>HZ</b>                      | <b>VOLTS</b>  |           | <b>AMPS</b>             | <b>RPM</b>     | <b>HP</b>     | <b>CODE</b>          | <b>SF</b>  | <b>DES</b>            | <b>PF</b>  | <b>NEMA NOM. EFF</b> |           |       |
| 60                             | 575           |           | 55                      | 1780           | 60            | G                    | 1.15       | B                     | 84 %       | 95 %                 | %         |       |
|                                |               |           |                         |                |               |                      |            |                       | %          |                      | %         |       |
| <b>PH</b>                      | 3             | <b>CL</b> | F                       | <b>MAX RPM</b> |               | <b>MAX CORR KVAR</b> | 13.6       | <b>USABLE AT 208V</b> |            | A                    |           |       |
| <b>BRG</b>                     | <b>DE</b>     | 6313      | <b>ODE</b>              |                | <b>ENCL</b>   | TEFC                 | <b>FR</b>  | 364T                  | <b>IP</b>  |                      |           |       |
| <b>GREASE</b>                  | POLYREX EM    |           |                         |                | <b>MTR WT</b> |                      | <b>LBS</b> |                       |            |                      |           |       |
| <b>CL I DIV 2 GRPS A,B,C,D</b> |               |           | <b>CL I ZONE 2 GRPS</b> |                |               | <b>IIA,IIB,IIC</b>   |            | <b>TEMP T</b>         | 200        | C                    |           |       |
| <b>INV READY</b>               | <b>CT</b>     | 4:1       | <b>HZ</b>               | 15-60          | <b>VT</b>     | 1000:1               | <b>HZ</b>  | 0-60                  | <b>CHP</b> | 1:1.5                | <b>HZ</b> | 60-90 |
| <b>INV TEMP CL</b>             | T3            | C         | <b>USABLE AT</b>        |                |               |                      |            |                       |            |                      |           |       |

## Parts list

| Part number | Description                              | Quantity |
|-------------|--|----------|
| SA397491    | SA A36-0013-4086                         | 1.000 ea |
| RA388387    | RA A36-0013-4086                         | 1.000 ea |
| 421948051   | LABEL, MYLAR                             | 1.000 ea |
| 000692000VD | LABEL WARNING                            | 1.000 ea |
| LB1449      | DIV-2/NEC WARNING LABEL                  | 1.000 ea |
| NP4152LUA   | SS CP XT CLI DIV2 UR CSA-C US-EEV NEMA P | 1.000 ea |
| 085922073B  | BRKT 360 085922072WCC KB                 | 1.000 ea |
| 415072001B  | CLAMP                                    | 1.000 ea |
| 078559001A  | +FANCV - 360                             | 1.000 ea |
| 034180012DA | KEY 1X4X1/4X1-1/2 L                      | 1.000 ea |
| 412118006A  | DRAIN                                    | 1.000 ea |
| 702676001C  | FAN 360                                  | 1.000 ea |
| 004824015A  | GREASE POLYREX EM                        | 0.540 lb |
| 032018012DK | HHCS 1/2-13X1-1/2 PLTD. 032018012DR      | 4.000 ea |
| 032018008AK | HHCS 1/4-20X1 PLATED                     | 4.000 ea |
| 032018024CK | HHCS 3/8-16X3 PLTD.                      | 3.000 ea |
| 415096002A  | CPLG 1/8 HEX TYPE                        | 1.000 ea |
| 415045002E  | SLGR                                     | 1.000 ea |
| 410700004F  | WSHR                                     | 1.000 ea |
| 035000001G  | GREASE RELIEF FITTING, ALEMITE 317400    | 1.000 ea |
| 034530052AB | P/NIP 1/8X6-1/2 Zinc                     | 1.000 ea |
| 034600001AA | BUSH 1/4TO1/8 BLACK                      | 1.000 ea |
| 034600001AA | BUSH 1/4TO1/8 BLACK                      | 1.000 ea |
| 085922073B  | BRKT 360 085922072WCC KB                 | 1.000 ea |
| 032018012DK | HHCS 1/2-13X1-1/2 PLTD. 032018012DR      | 4.000 ea |
| 032018024CK | HHCS 3/8-16X3 PLTD.                      | 3.000 ea |
| 415045002E  | SLGR                                     | 1.000 ea |
| 412118006A  | DRAIN                                    | 1.000 ea |
| 034530020AB | P/NIP 1/8X2-1/2 PLTED                    | 1.000 ea |
| 415096002A  | CPLG 1/8 HEX TYPE                        | 1.000 ea |
| 035000001G  | GREASE RELIEF FITTING, ALEMITE 317400    | 1.000 ea |

|             |  |          |
|-------------|--|----------|
| 077176000L  | C/BOX, PAINTED 440                     | 1.000 ea |
| 077176001A  | CBOXC, PAINTED 360-400                 | 1.000 ea |
| 043292000AJ | GASK 320-400                           | 1.000 ea |
| 402731001A  | GASK 360-440                           | 1.000 ea |
| 418150003A  | GREASE FITTING CAP                     | 1.000 ea |
| 032018005AK | HHCS 1/4-20X5/8 PLATED                 | 4.000 ea |
| 032018008CK | HHCS 3/8-16X1L PLATED                  | 4.000 ea |
| 035000001A  | ALFTG 1/8" 1610-BL                     | 1.000 ea |
| 415000115H  | T/LUG #2AWG-4/0AWG                     | 1.000 ea |
| 406099000A  | PLUG - FAN COVER 320-440               | 1.000 ea |
| 032018005DL | 1/2-13 X 5/8 SILICON BRONZE HHCS       | 1.000 ea |
| 035000001A  | ALFTG 1/8" 1610-BL                     | 1.000 ea |
| 418150003A  | GREASE FITTING CAP                     | 1.000 ea |
| MG1025L14   | WILKOFAS, 776.14, GRUNDFOS BLACK       | 0.250 ga |
| 033775004EA | DRSCR #6-1/4 304 S.S.                  | 4.000 ea |
| 034180034HA | KEY 5/8X5/8X4-1/4 L                    | 1.000 ea |
| 14PA1000    | PACKAGING 314 GROUP COMBINED PRINT     | 1.000 ea |
| HW1000A32   | 5/16 FL WASHER WIDE, ID=.344, OD=1.125 | 3.000 ea |
| 032509020C  | CARRIAGE BOLT - 360                    | 3.000 ea |

617431-412

**DUTY MASTER ALTERNATING CURRENT MOTORS**  
SQUIRREL-CAGE INDUCTION

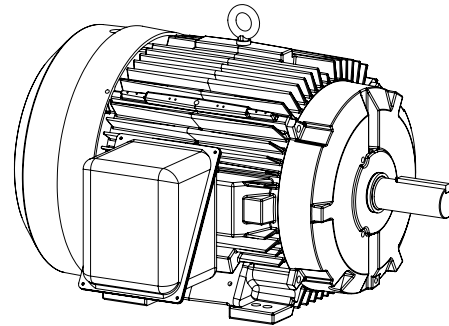
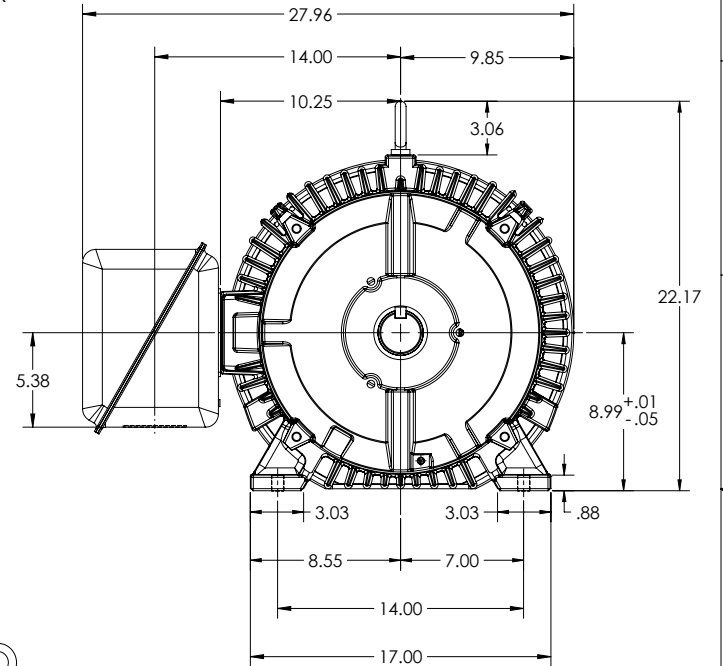
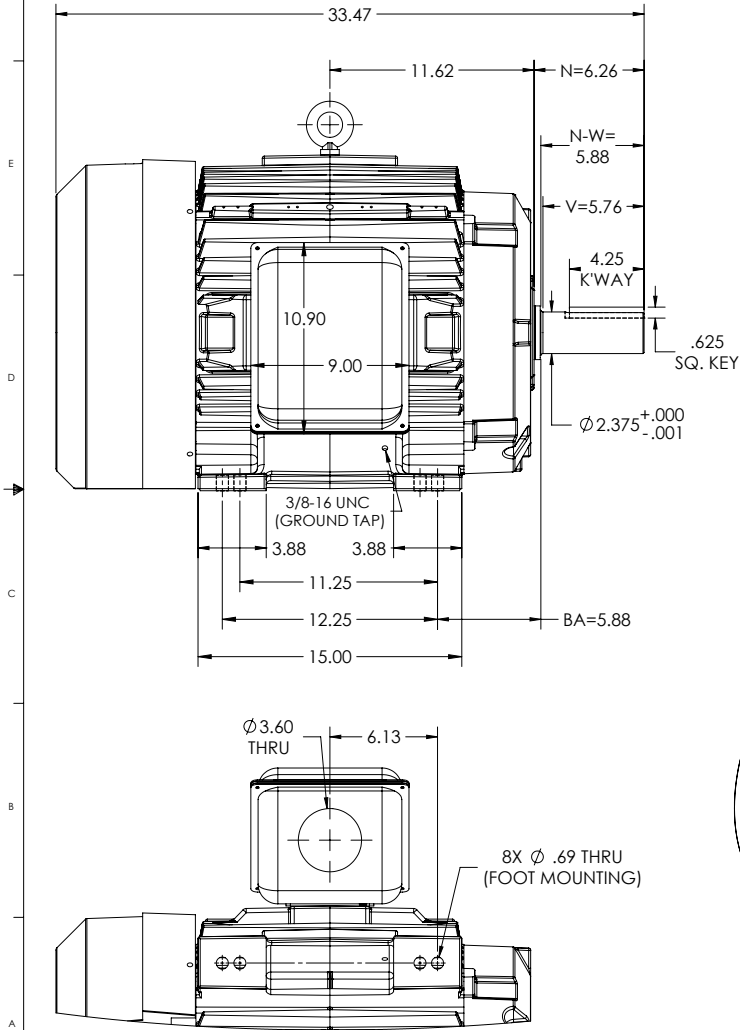
ENCLOSURE: TOTALLY ENCLOSED

MOUNTING: FOOT, F-1 SIDE

E365T/E364T FRAME MOUNTING

COOLING: FAN COOLED

STEEL CONDUIT BOX



SHEET NUMBER  
**1 OF 2**

Z1F-117219

IF MOUNTING CLEARANCE DETAILS ARE REQUIRED, CONSULT FACTORY.  
MAX PERMISSIBLE SHAFT RUNOUT WHEN MEASURED AT END OF STANDARD SHAFT EXTENSION IS .003" T.I.R.

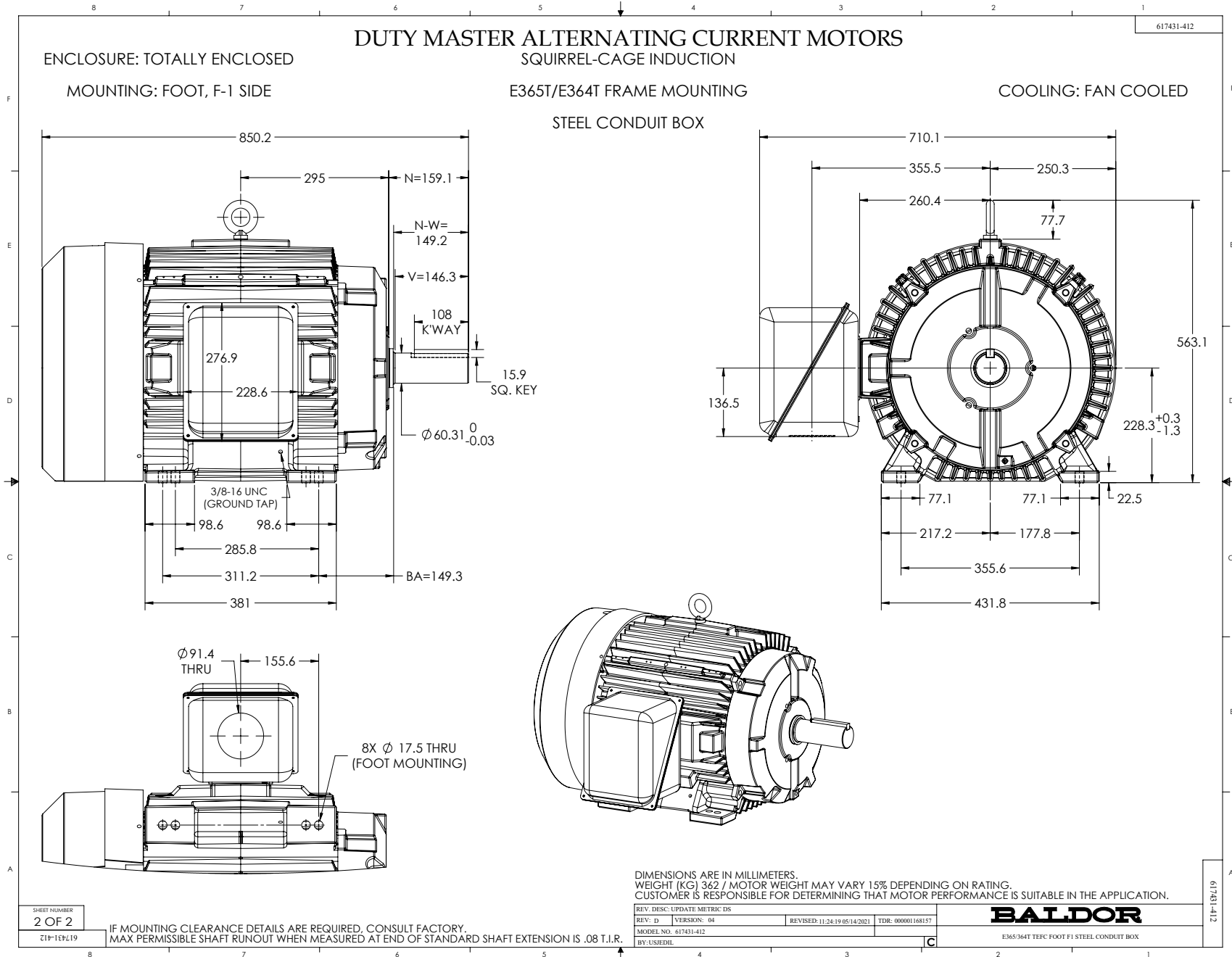
DIMENSIONS ARE IN INCHES.  
WEIGHT (LBS.) 800 / MOTOR WEIGHT MAY VARY 15% DEPENDING ON RATING.  
CUSTOMER IS RESPONSIBLE FOR DETERMINING THAT MOTOR PERFORMANCE IS SUITABLE IN THE APPLICATION.

|                             |                              |                  |
|-----------------------------|------------------------------|------------------|
| REV. DESC: UPDATE METRIC DS | REVISED: 11-24-19 05/14/2021 | TDR: 00000168157 |
| REV: D                      | VERSION: 04                  |                  |
| MODEL NO. 617431-412        |                              |                  |
| BY: USJEDH                  |                              |                  |

**BALDOR**

E365/364T TEFC FOOT F1 STEEL CONDUIT BOX

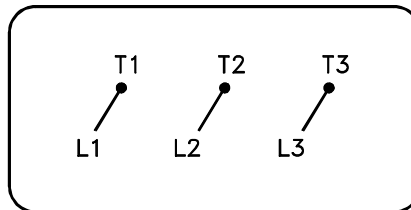
617431-412





416820-036

A-C MOTOR  
CONNECTION DIAGRAM  
STANDARD 3 LEAD CONNECTED



(N.P. 1575-BA)

416820-036

|                                      |                              |                   |
|--------------------------------------|------------------------------|-------------------|
| REV. DESC: LOADED TO BUS, C/R 335225 |                              |                   |
| REV. LTR: -                          | VERSION: 00                  | TDR: 000000538207 |
| FILE: \MGA\00000\682                 | REVISED: 11:54:06 04/30/2010 |                   |
| MTL: -                               | BY: RAGRA                    |                   |

**BALDOR**

CONN DIAG - STANDARD 3 LEAD  
SH 1 of 1